

EASY LIFT 101-48AJ

Simple Inside™

CAPABILITY

- 101' working height
- 48' horizontal reach with 265 lbs
- 507 lbs lift capacity
- Below ground level reach
- Outriggers set-up in 10 feet alley
- 35 inches overall width retracted

PRODUCTIVITY

- Work side way even in narrow mode
- Easy to haul at only 9600 lbs
- Top mount lifting points for crane
- 4x oversized tie down anchor points
- 140° amplitude articulated jib
- High departure angle for climbing anywhere. NO custom made trailer required
- High 14 inches ground clearance

- Double speed hydraulic pumps for faster and simultaneous boom operations
- Standard jib raising enable while driving for better clearance while climbing

MANY CONFIGURATIONS FOR YOUR NEEDS

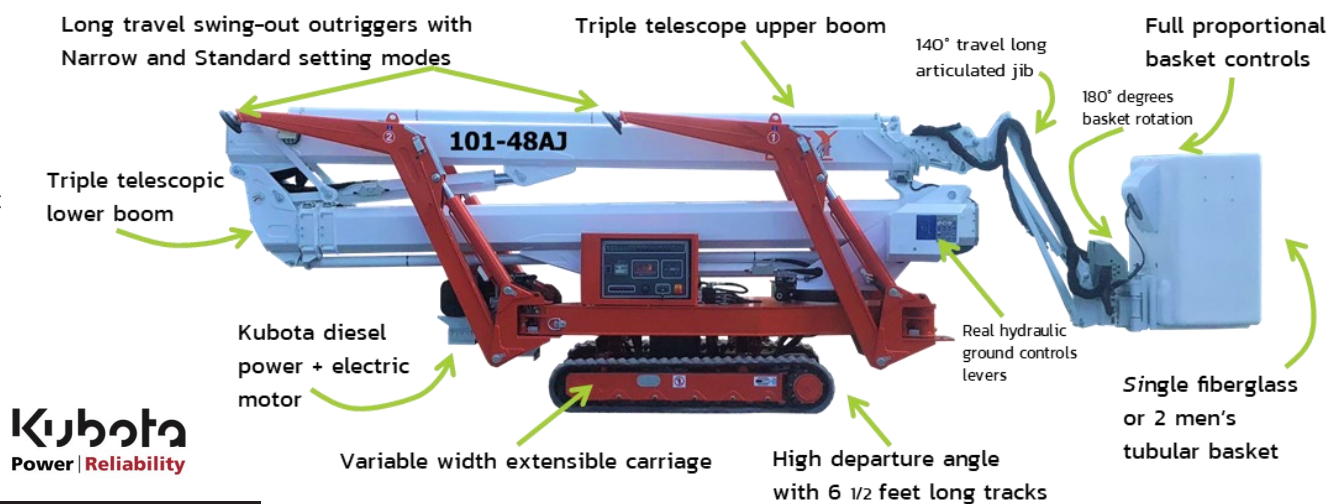
- Kubota diesel + electric AC motor
- Lithium Ion battery + ultra fast charger
- Kubota diesel + Lithium Ion

STANDARD FEATURES

- Lightweight aluminum detachable basket with 180° rotation
- Fully proportional wireless remote control for drive and boom
- Solid wired dedicated basket controls
- Live hydraulic separate ground controls
- Hydraulic extendable carriage
- Movement alarm, Hour meter
- Ultra long 6 1/2 feet rubber tracks
- Articulated jib operational at full capacity

BETTER BUILT **BETTER WARRANTY**

Unlimited hours + 3 full years on structural



OPTIONS AND ACCESSORIES

- Electric emergency descent system
- Full arborist safety and production package
- Hostile protection with thick plate covers
- Non-marking soft rubber tracks
- Special painting
- Working lamp on basket
- One /two Men fiberglass baskets
- Outriggers "sinking" alarm
- Teflon pads kit (4) for stabilizers;
- Strobe light (beacon)
- Winter start kit

SAFETY

- Active envelope stability management system with redundant common switches
- Easy to read operational pilot lamps
- Wind safe up to 28Mph (45Kph)
- Solid state 12V electrical components
- Proportional basket controls for intuitive and precise simultaneous boom movements
- Smooth and automatic basket leveling
- Harness anchor point(s)
- Basket redundant overloading device

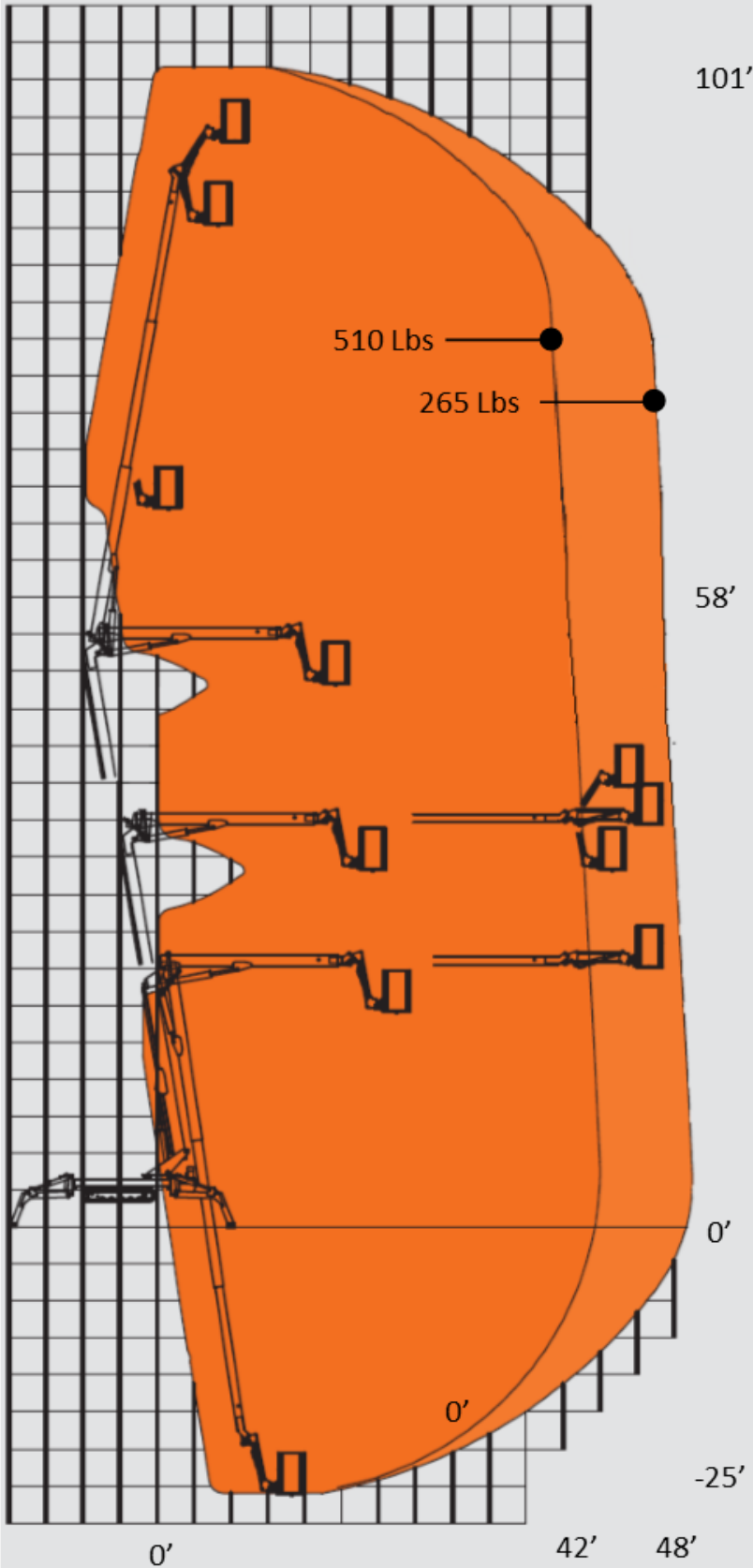
RELIABILITY

- High tensile steel boom Domex SSAB
- Standard high quality components like Sauer Danfoss, Telemecanique, Finder
- Patented telescopic boom power-track for easier replacement of components
- External adjustable telescopic boom wear pads; no shimming required
- Simple and painless 12 Volts system; no complicated 24 V system
- High quality powder coat paint

EASY LIFT 101-48AJ

Simple Inside™

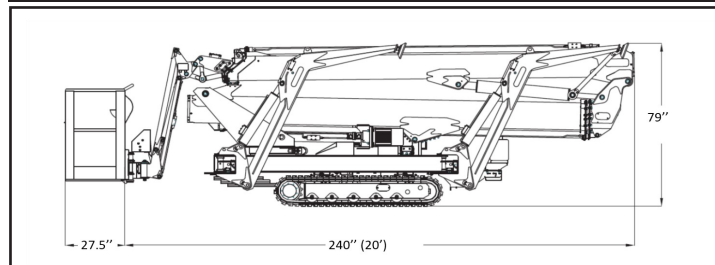
WORKING AREA



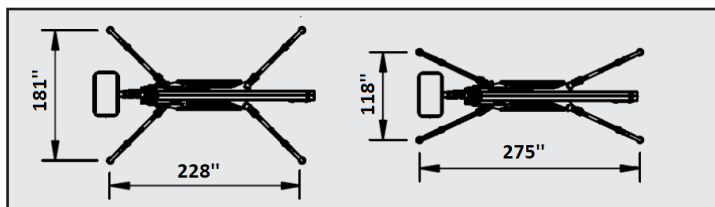
DIMENSIONS AND CAPABILITY

• Working height	101'
• Horizontal side reach @265lbs	48'
• @ 507lbs	42'
• Basket capacity at full height	507 lbs
• Overall width retracted / extended	35" / 51"
• Below ground outreach	Minus 25'
• Minimum length without basket	20'-0"
• Ground clearance	14"
• Height with tracks retracted /extended	79" / 85"
• 5 feet length articulated jib motion	140° (-80° / + 60°)
• Basket dimensions	Aluminum 55" x 28"
	One man fiber 30" x 28"
	Two men fiber 44" x 28"
• Turret rotation	400°
• Basket rotation	180°(90°+ 90°)
• Max slope travel ability	32° or 62 %
• Outriggers footprint Standard	19'-0" X 15'-1"
• Outriggers footprint Narrow	9'-9" X 23'-0"
• Total weight diesel	9600 lbs

SIDE VIEW AND DIMENSIONS



OUTRIGGERS SETTINGS STANDARD AND NARROW



We reserve the right to make specifications changes or equipment changes without notice. Pictures depicted in this publication are for illustrative purposes only. Scale of drawing may be not accurate. UP Equip, Easy-Lift and stated models are protected under Copyright. Legal drop 2016

