

EASY LIFT 77-40AJ

CAPABILITY

- 77' working height
- 40' unrestricted horizontal reach
- 510lbs unrestricted basket capacity
- Outriggers set-up in 10 feet alley
- 38.5 inches overall width retracted
- Standard Diesel and Electric

STANDARD FEATURES

- Lightweight aluminum / Fiber basket with 80°+80° hydraulic rotation
- Fully proportional wireless remote control
- Live hydraulic ground controls
- Hydraulic extendable carriage
- Movement alarm + Hour meter
- Ultra long 6 feet rubber tracks
- Articulated jib operational at full capacity
- AC power + Air-Water line to basket
- Manual emergency descent system
- Automatic self leveling for outriggers
- Long travel, multiple positions outriggers

RELIABILITY

- High tensile steel boom Domex SSAB
- Standard high quality components like Sauer Danfoss, Telemecanique, Finder
- Patented telescopic boom power-track for easier replacement of components
- External adjustable telescopic boom wear pads; no shiming required
- Simple and painless 12 Volts system
- High quality powder coat paint

PRODUCTIVITY

- Work side way even in narrow mode
- Easy to haul at only 7165lbs
- Top mount lifting points for crane
- 4x oversized tie down anchor points
- 100° amplitude articulated jib
- High departure angle for climbing anywhere. NO custom made trailer required

- Double speed hydraulic pumps for faster and simultaneous boom operations
- Standard jib raising enable while driving for better clearance while climbing
- 400° turret rotation

MANY CONFIGURATIONS FOR YOUR NEEDS

- Kubota diesel + electric AC motor
- Lithium Ion battery + ultra fast charger
- Kubota diesel + Lithium Ion



Kubota
Power | Reliability

SAFETY

- Passive envelope stability management system with redundant common switches
- Easy to read operational pilot lamps
- Wind safe up to 28Mph (45Kph)
- Solid state 12V electrical components
- Proportional controls for intuitive and precise simultaneous boom movements
- Smooth and automatic basket leveling
- Harness anchor point(s)
- Basket anti-overloading device

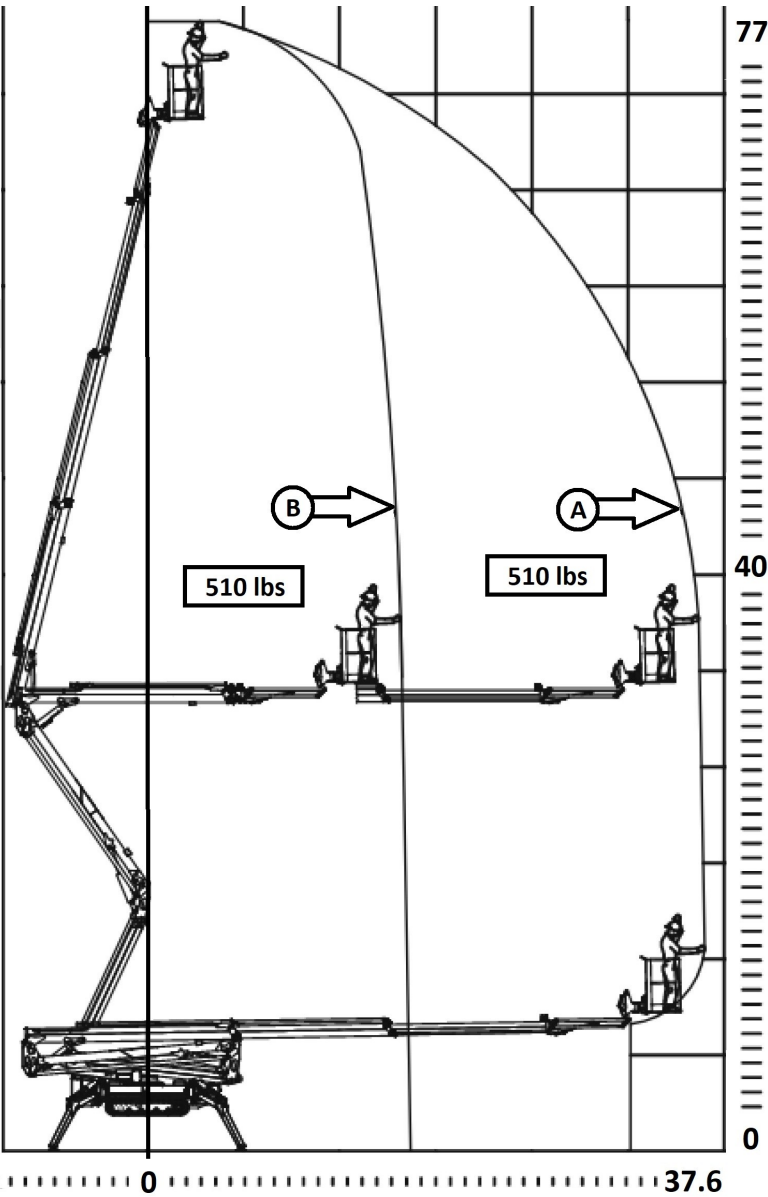
OPTIONS AND ACCESSORIES

- Electric emergency descent system
- Full arborist safety and production package
- Hostile protection with HD plate covers
- Non-marking tracks
- Special and custom painting
- Working lamp on basket
- One / two Men fiberglass baskets
- Outriggers "sinking" alarm
- Teflon pads kit (4) for stabilizers;
- Strobe light (beacon)
- Winter start kit

EASY LIFT 77-40AJ

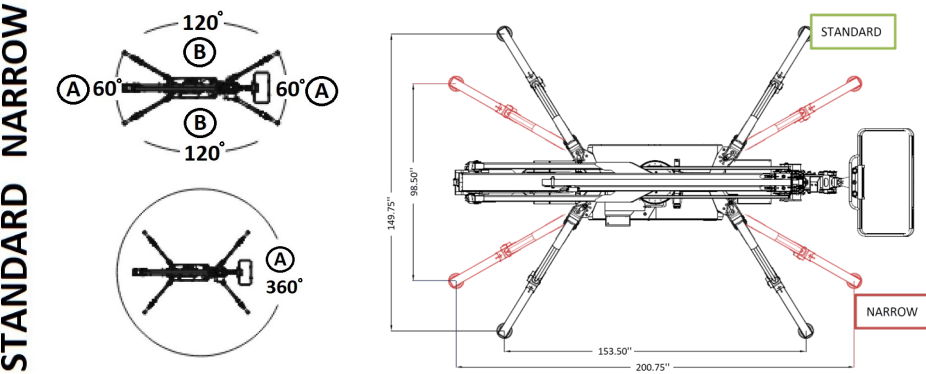
WORKING AREA

DIMENSIONS AND CAPABILITY



• Working height	77'
• Basket capacity at full height + Full outreach	510 lbs
• Basket side reach with outriggers in standard setting	40'
• Front / Rear reach with narrow outriggers setting	40'
• Side reach with narrow outriggers settings	20'
• Overall width retracted / extended	38.5" / 51"
• Minimum length without / with basket	17'-5" / 19'-5"
• Height when driving	78.75"
• 5 feet length articulated jib motion	100°
• Basket dimensions	Aluminum 55" x 28"
	One man fiber 30" x 28"
	Two men fiber 44" x 28"
• Turret rotation	400°
• Basket rotation	80°+ 80°
• Trailer climbing capability	16° or 29 %
• Max slope travel ability	32° or 62 %
• Outriggers footprint Standard	12'-9" X 12'-6"
• Outriggers footprint Narrow	8'-3" X 16'-9"
• Total weight Diesel and AC version	7165 lbs
• Total weight Diesel and Lithium version	7606 lbs

OUTRIGGERS SETTINGS STANDARD AND NARROW



SIDE VIEW AND DIMENSIONS

