

CAPABILITY

- 172' working height
- 66' horizontal reach
- Fit thru a standard double door
- 800 lbs lift capacity
- Multiple positions swing-out outriggers
- Outriggers set up within 16 feet alley
- **Work sideway in narrow mode**
- Radio remote control
- High departure angle for climbing

STANDARD FEATURES

- Hatz Turbo diesel
- Radio remote control
- Outriggers control from remote
- Long travel self-levelling outriggers
- Hydraulic basket rotator
- Movement alarm
- Extra-long black rubber tracks
- *Easy Entry™* large basket
- Proportional controls
- Hour meter
- Emergency descent system
- 440° turret rotation
- Jib raising enable while driving
- Top mount lifting points for crane

POWERTRAIN OPTIONS

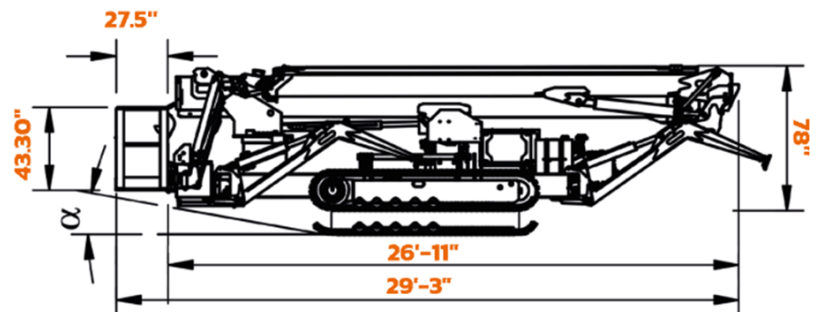
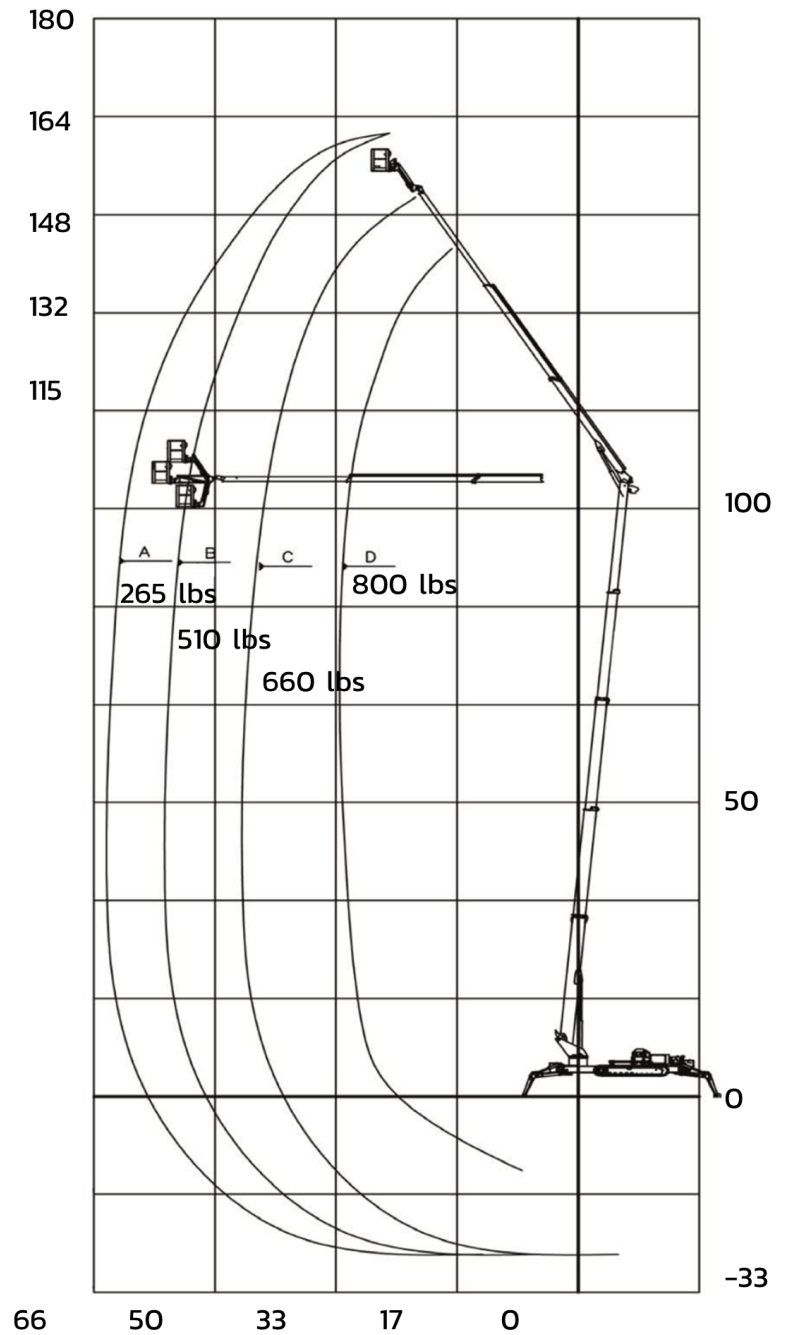
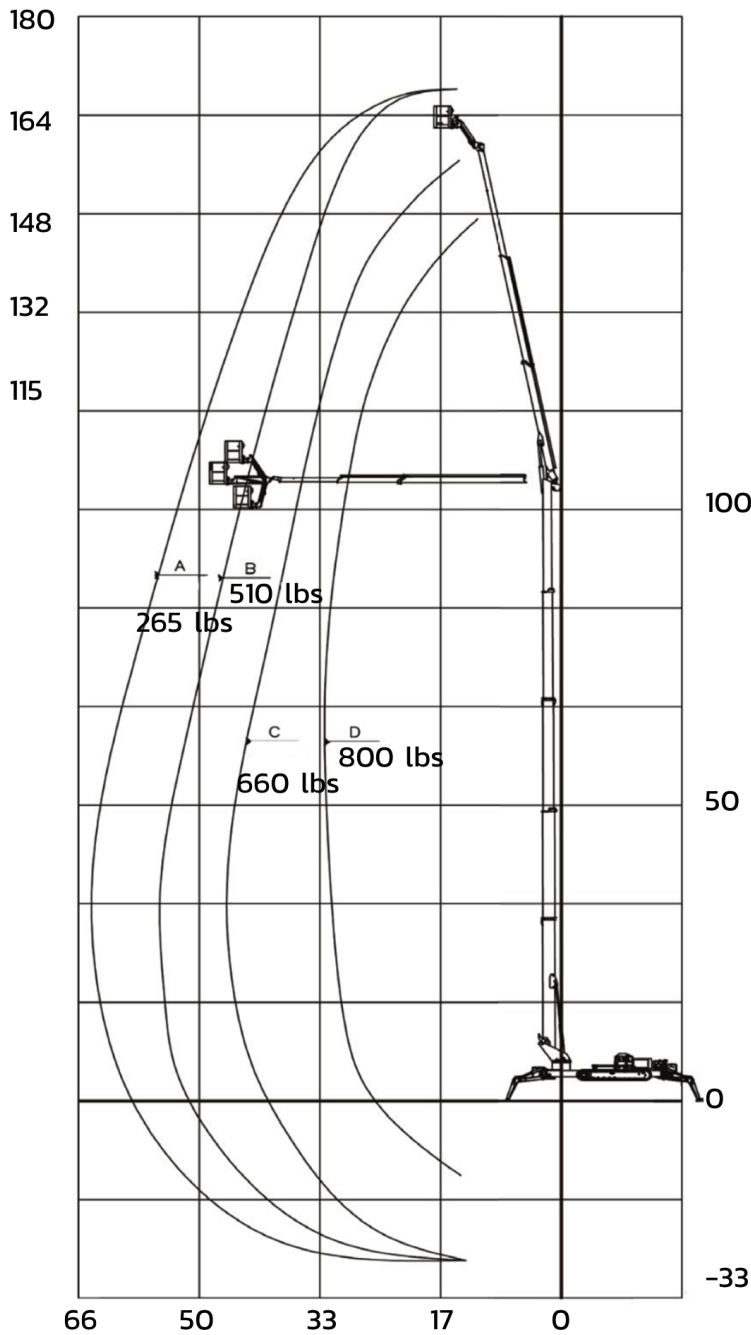
- Hatz Turbo diesel + AC motor
- Hatz Turbo diesel + Lithium Ion

RELIABILITY

- High tensile steel boom Domex SSAB
- Standard high quality components like Sauer Danfoss, Telemecanique, Finder
- Patented telescopic boom power-track for easier replacement of components
- External adjustable telescopic boom wear pads; no shimming required
- Simple and painless 12 Volts system
- High quality powder coat paint

172-66AJ





Simple Inside™

OPTIONS

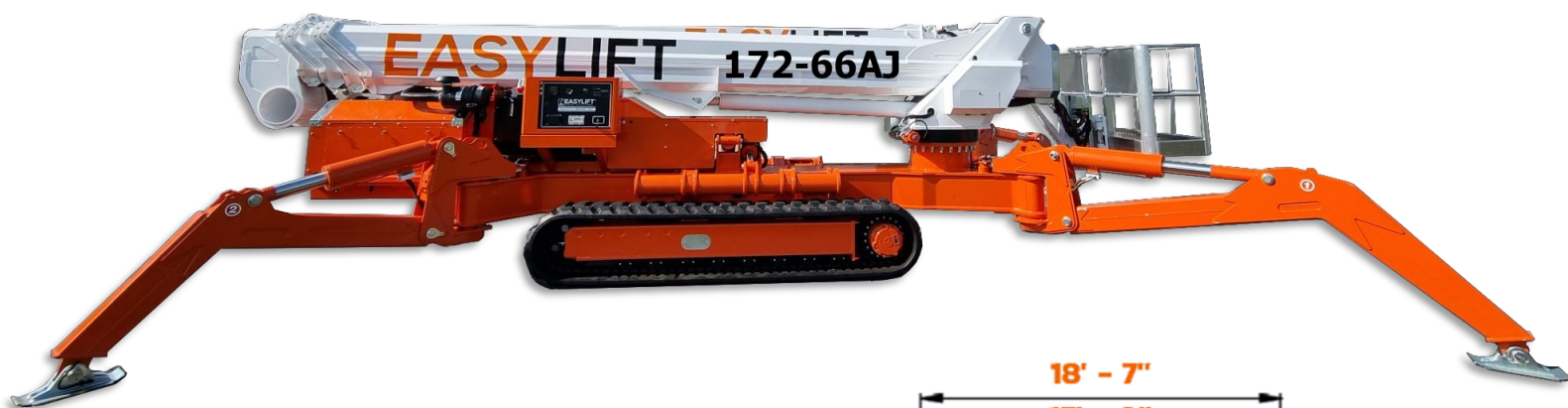
- Emergency descent 12V electro pump
- Non-marking soft rubber tracks
- Special painting
- Working lamp on basket
- One man fiberglass basket
- Two-Men *Easy Entry™* fiberglass basket
- Outriggers "sinking" alarm
- Teflon pads kit (4) for stabilizers;
- Strobe light (beacon)
- Casters on basket
- Winter start package
- AC power to basket
- Air-Water line to basket

SAFETY

- Basket anti overload device
- Dual stability management system
- Easy to read operational pilot lamps
- Wind safe up to 28Mph (45 Kph)
- Solid state simple electrical components
- Proportional joystick controls for intuitive and precise movements
- Smooth and automatic basket leveling
- Full hydraulic ground levers
- Harness anchor points
- 4x oversized tie down anchor points

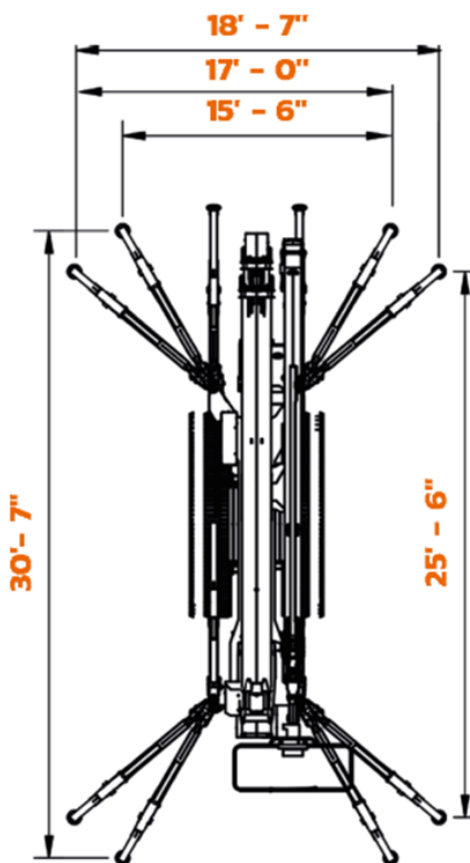
PRODUCTIVITY

- Work side way even in narrow mode
- Easy to haul at only 31,950 lbs
- Top mount lifting points for crane
- 4x oversized tie down anchor points
- High amplitude articulated jib
- High departure angle for climbing
- NO custom made trailer required
- Double speed hydraulic pumps for faster and simultaneous boom operations
- Standard jib raising enable while driving for better clearance while climbing
- 400° turret rotation



DIMENSIONS AND SPECS

•Working height	172'
•Basket capacity	800 lbs
• Horizontal reach	66'
• Length	without basket 26'-11"
	with basket 29'-2"
• Height when driving	78"
• 5 feet length articulated jib motion	90°
•Min / Max width	62" / 78"
•Basket dimensions (L x W x H)	
	Aluminum 71" x 32"
	One man fiber 30" x 28"
	Two men fiber 44" x 28"
•Turret rotation	440 degrees
•Max slope travel ability	16.7° or 30 %
•Total weight	31 950 lbs



Simple Inside™