

61-36A

CAPABILITY

- 61' working height
- 36' horizontal reach
- 440 lbs lift capacity
- Multiple positions swing-out outriggers
- Work sideway in narrow mode

ARBORIST PACKAGE**STANDARD FEATURES**

- Hatz diesel + electric AC motor
- Full hostile package protection
- Wired remote control
- Outriggers control from remote
- Long travel self-levelling outriggers
- Hydraulic basket rotator
- Movement alarm
- Extra-long black rubber tracks
- One-man *Easy Entry™* fiberglass basket
- AC power to basket
- Air-Water line to basket
- Proportional controls
- Hour meter

SAFETY

- Basket anti overweight redundant mechanical switches
- Active stability management system with redundant system
- Easy to read operational pilot lamps
- Wind safe up to 28Mph (45 Kph)
- Solid state simple electrical components
- Proportional hydraulic joystick controls for intuitive and precise boom movements
- Smooth and automatic basket leveling



OPTIONS

- Emergency descent 12V electric pump
- Radio remote control
- Non-marking soft rubber tracks
- Special painting
- Working lamp on basket
- Two-Men aluminium basket
- *Easy Entry™* fiberglass basket
- Outriggers "sinking" alarm
- Teflon pads kit (4) for stabilizers;
- Strobe light (beacon)
- Casters on basket
- Winter start package

POWERTRAIN OPTIONS

- Hatz diesel + AC motor (standard)
- Honda gas + electric AC motor
- Lithium Ion + Gas or diesel engine
- Lithium Ion

RELIABILITY

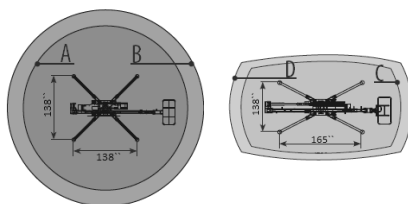
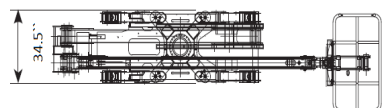
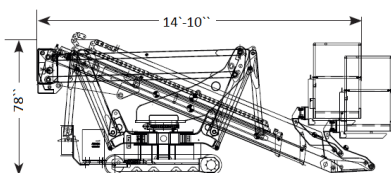
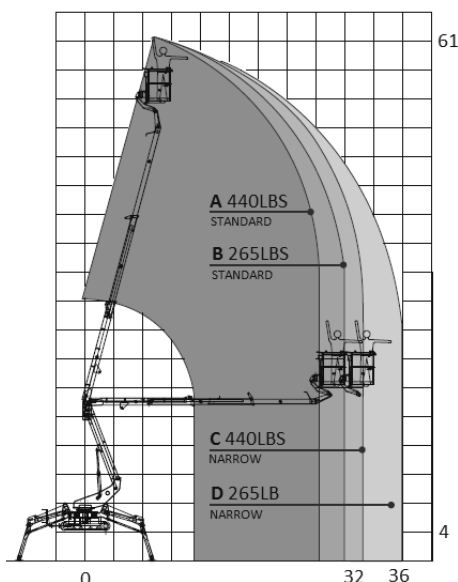
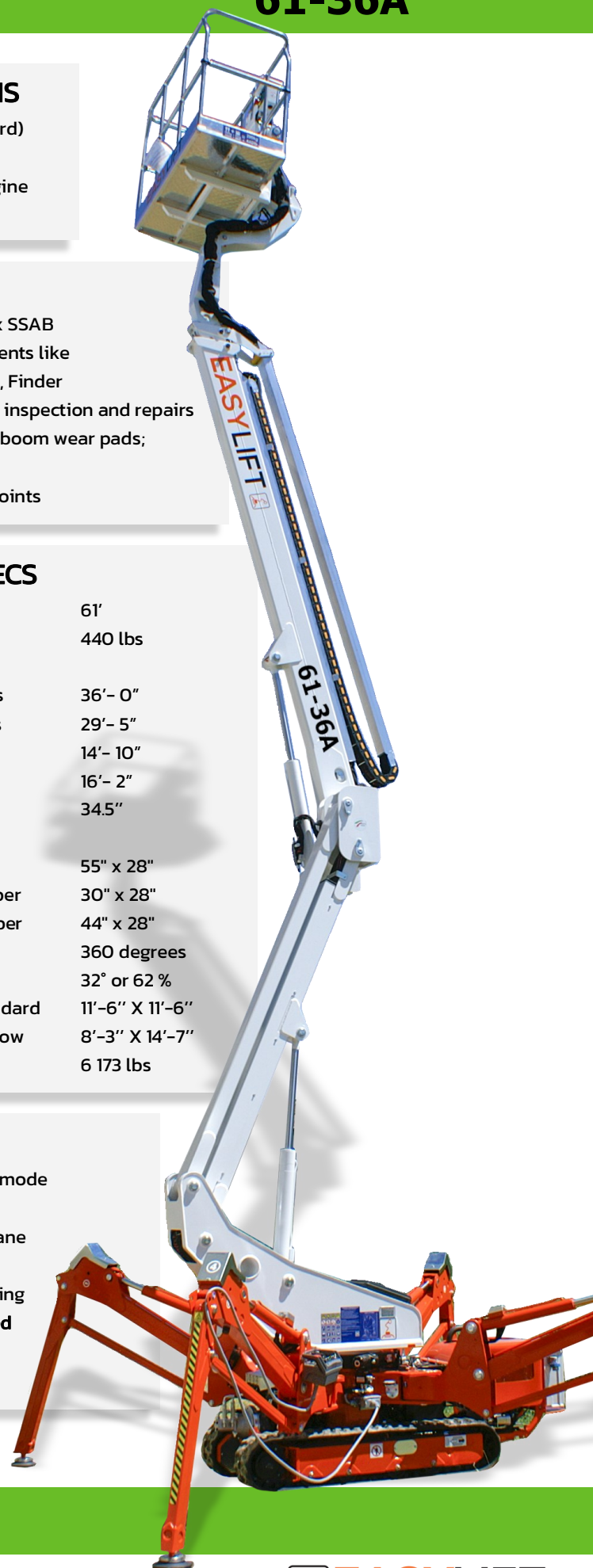
- High tensile steel boom Domex SSAB
- Standard high quality components like Sauer Danfoss, Telemecanique, Finder
- External power track for easier inspection and repairs
- External adjustable telescopic boom wear pads; no shimming required
- Greasable fittings in all pivot points

DIMENSIONS AND SPECS

Working height	61'
Basket capacity	440 lbs
Maximum horizontal side reach	
with 265 lbs	36' - 0"
with 440lbs	29' - 5"
Minimum lenght	14' - 10"
travel position	16' - 2"
Minimum width	34.5"
Basket dimensions (L x W x H)	
Aluminum	55" x 28"
One man fiber	30" x 28"
Two men fiber	44" x 28"
Turret rotation	360 degrees
Max slope travel ability	32° or 62 %
Outriggers footprint	Standard 11'-6" X 11'-6"
	Narrow 8'-3" X 14'-7"
Total weight diesel	6 173 lbs

PRODUCTIVITY

- Work side way even in narrow mode
- Easy to haul at only 6200 lbs
- Top mount lifting points for crane
- 4x tie down anchor points
- High departure angle for climbing
- **NO custom made trailer required**
- High ground clearance



Simple Inside™