

## 87-48AJ

## CAPABILITY

- 87' working height
- 48' horizontal reach with 265 lbs
- 510 lbs lift capacity
- Below ground level reach
- Outriggers set-up in 9 feet alley
- 35 inches overall width retracted
- **NO custom made trailer required**
- Std 12Volts electrical system
- **Work sideway in narrow stance**
- Super low ground pressure
- Live hydraulic ground controls

## ARBORIST PACKAGE STANDARD FEATURES

- Kubota diesel + electric AC motor
- Full hostile package protection
- Wireless radio remote control
- Outriggers control from remote
- Long travel outriggers
- Self leveling outriggers
- Hydraulic basket rotator
- Movement alarm
- One-man *Easy Entry™* fiberglass basket

## POWERTRAIN OPTIONS

- Kubota diesel + AC motor (standard)
- Kubota diesel + Lithium Ion

## SAFETY

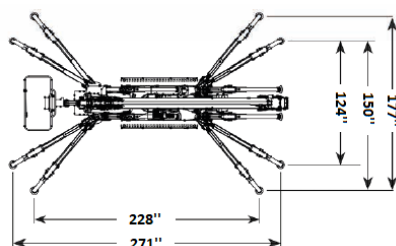
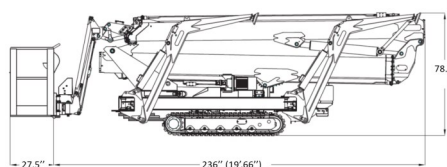
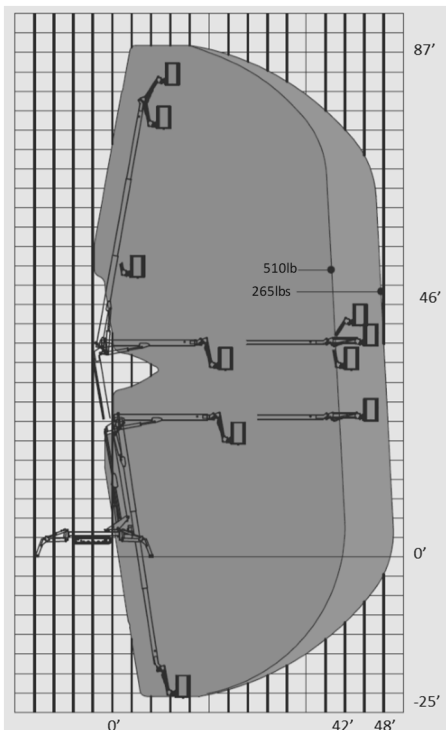
- Basket anti over-load system
- Active envelope stability management system with redundant sensors
- Easy to read operational pilot lamps
- Wind safe up to 28Mph (45Kph)
- Solid state simple electrical components
- Proportional joystick controls for intuitive and precise boom movements
- Smooth and automatic basket leveling
- Harness anchor points





## RELIABILITY

- High tensile steel boom Domex SSAB
- High quality components like Marzocchi, Kubota, Sauer Danfoss, Telemecanique,
- Patented internal telescopic power-track for easier replacement of components
- External adjustable telescopic boom wear pads; no shimming required
- High quality powder coat paint
- Easy to use emergency boom descent system
- Emergency recovery system for drive



## DIMENSIONS AND SPECS

• Working height		87'
• Basket capacity		510 lbs
• Horizontal reach	with 265lbs	48'
	with 510lbs	42'
	With outriggers in standard setting	48'
	Front / Rear in narrow setting	48'
• Jib articulation	Down	-80°
	Up	+80°
• Below ground reach		Minus 25'
• Length	without basket	19'-7"
	with basket	21'-7"
• Height when driving		79" / 84"
• 5 feet length articulated jib motion		140° (-80° / + 60°)
• Min / Max width		35.5" / 51"
• Basket dimensions (L x W x H)	Aluminum	55" x 28"
	One man fiber	30" x 28"
	Two men fiber	44" x 28"
• Turret rotation		400 degrees
• Max slope travel ability		32° or 62°
• Outriggers footprint	Standard	14'-9" X 19'-0"
	Narrow	10'-4" X 22'-7"
• Total weight	Diesel	8300 lbs
	Diesel + Lithium	8600 lbs

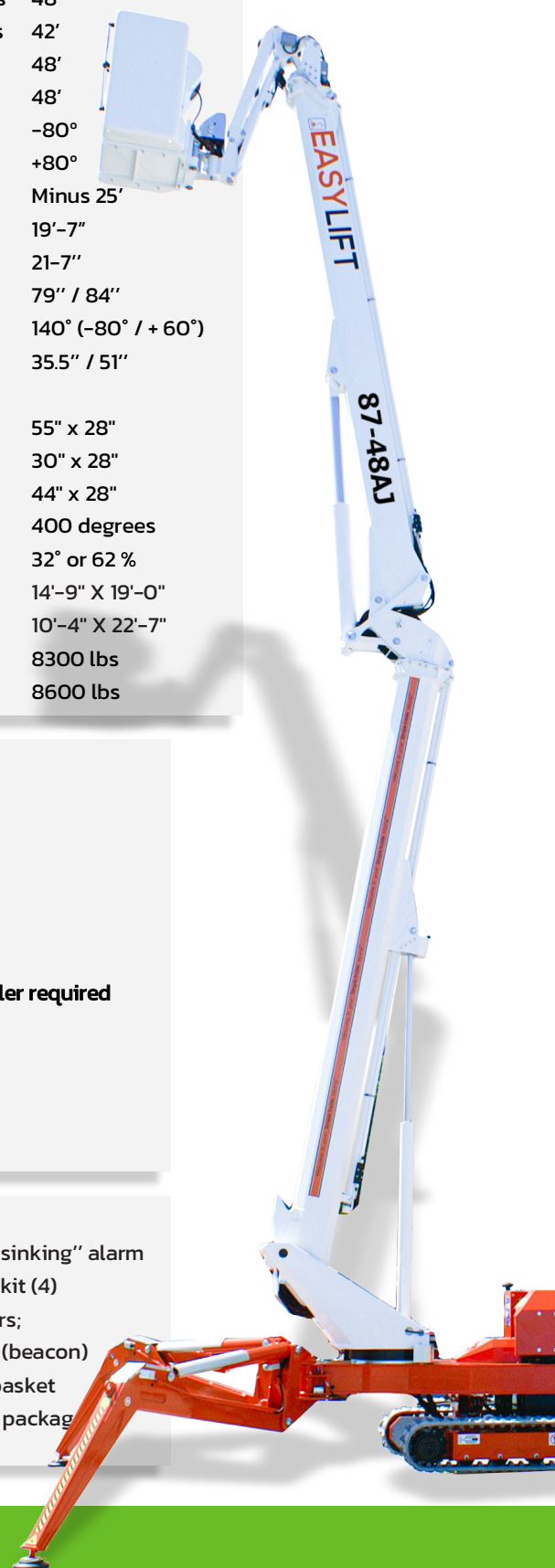
## PRODUCTIVITY

- Work side way even in narrow mode
- Easy to haul at only 8300 lbs
- Top mount lifting points for crane
- 140° amplitude articulated jib
- High departure angle for climbing
- High ground clearance **NO custom made trailer required**
- Double speed hydraulic pumps for faster and simultaneous boom operations
- Standard jib raising enable while driving for better climbing

## OPTIONS

- Non-marking tracks
- Special painting
- Working lamp on basket
- Two-Men aluminium basket
- Two-Men *Easy Entry*™ fiberglass basket
- Outriggers "sinking" alarm
- Teflon pads kit (4) for stabilizers;
- Strobe light (beacon)
- Casters on basket
- Winter start package

**Kubota**  
Power | Reliability



**Simple Inside™**