



# Compact tracked cranes

2024



# WHO WE ARE

**Since 2001**, UPequip is specialized in challenging access solutions. It is strongly embedded in our DNA to find a solution for any given access defiance. We are dedicated to provide customers easy, safe and reliable equipment to access hard-to-reach working areas. We strive to be an important part of our customers daily success and overall productivity.

We, at UPequip are committed to supply the best customer service and spread usage of the simplest, safest and fairest priced compact tracked lifts and cranes

Our team is composed of highly qualified technicians who's passion for learning never come to an end. The knowledge and experience we have gathered over time is invaluable. Not only do we understand perfectly how atrium compact tracked spider lifts and cranes are built, we know how to help and explain when operational and technical issues arise.



# DID YOU KNOW

**Did you know that UPequip is among the fastest growing companies in North America ?**

For several years, we have been recognized as one of the fastest growing companies of any trade in North America and THE fastest growing Aerial Lift supplier. Our phenomenal growth has not been realized by any acquisitions of other companies but in an organic way. Our hard work to offer the best of ourselves and to stay focused on what made our success over the years; Listening, understanding and supporting.

# OUR CAPABILITY

**Experience**

A humble total of 142 years of crew experience in equipment based in North America; mechanics, sales and customer service. This is what we put at your disposal. More than a decade of strong and stable relationship with the same manufacturer Easy Lift and 21 years as a company. There's nothing that we cannot do !

**Inventory**

Constant and increased production capability is the key to satisfy the avid demand for our growing brand. A large warehouse stuffed with parts available here in North America ensure you that your unit will be back and running as soon as possible. With more than 15, 000 parts available off the shelf, we ship your order fast track with an impressive 99,1% fill rate (audited 2020)

**Facility**

With more than 180 000 square feet of production and maintenance facilities, we are still growing and heading to expansion stage 4 and 5 to accommodate strong demand. State of the art workshop is the core of all production, assembly, repairs, maintenance and parts shipping.

**Support**

Our response to online service request is second to none. We gather all required information in order to diagnose a problem and provide end users with both knowledge and parts to perform the repair.

**Knowledge**

The experience and comprehension of units we've gathered over the years allow us to teach almost anyone to maintain and fix their units. There is no extensive mechanical or electrical skills required on your end to perform the task unless you decide to outsource it.

**Ownership**

Your problem becomes our problem and we will do all that's required to address it. Meanwhile, our solutions must also become your solutions. It is a team work between you and us and goes both ways. Together, we will make miracles.



# Cseries

- ✓ **Ultra narrow, from 29<sup>1</sup>/<sub>2</sub> to 31<sup>1</sup>/<sub>2</sub> inches**
- ✓ **Super strong, up to 8810 lbs cap.**
- ✓ **Amazing height, up to 72 feet**
- ✓ **Versatile with up and over capability**

- ✓ Superior structural steel laser cut and CNC hydro formed construction with SSAB Domex™
- ✓ Oversized heat treated corrosion resistant pivots points and linkages
- ✓ Superior lifting capability and best precise control on the market
- ✓ Heavy-duty rubber tracks with high tensile sealed internal steel cable with curbshield
- ✓ Longer tracks for increased climbing stability and better weight distribution for sensitive ground
- ✓ Robust undercarriage with serviceable idler wheels, hubs and motors
- ✓ Solid-state 12 Volts components
- ✓ Unique patented multiple positioning swing out and telescopic outriggers to set your crane anywhere
- ✓ Exclusive 200° articulated and telescopic jib with multiple telescopes
- ✓ Exclusive telescopic booms wear pads made of super slick UHDPE.
- ✓ Real time display for load, main + angles + length
- ✓ Easy to install accessories



LIVE MONITORING



SET IN CONFINED SPACE



ENTER ANY SINGLE DOOR



UP AND OVER CAPABILITY



7200 SET-UP POSSIBLE



CLIMB WITH EASE



# C1e

**29.5" WIDTH  
1380 LBS CAPACITY  
16' LIFTING HEIGHT  
PICK AND CARRY**

## C6 Specifications

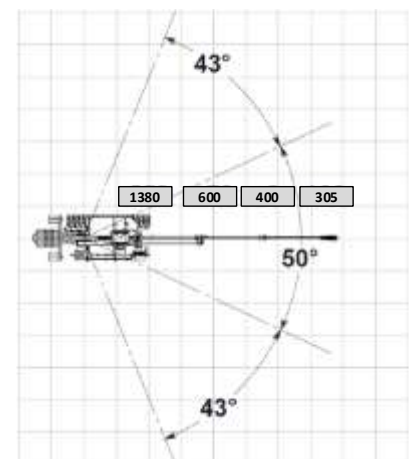
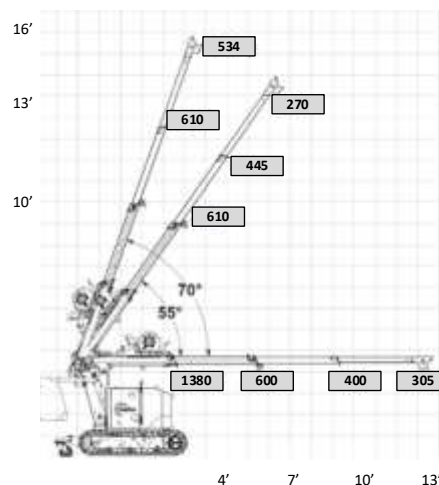
Max lift height with hydraulic telescopic Jib	16'
Max capacity	1380 lbs @ 3' radius
Horizontal outreach	305 lbs @ 13' out
Available configurations	24V Battery
Minimum size in travel position	29.5"w x 59"l x 55"h
Maximum width w. extended carriage	42"
Travel speed	Infinite proportional remote
Operational weight	1500 lbs
Counterweight	Variable position

## C6 Features and options

- ✓ Wireless remote for boom, outriggers and drive
- ✓ LCD display on remote control for live chassis angle, boom and jib angle, height + reach, load
- ✓ Glow plugs and winter start package
- ✓ Pick and Carry capability
- ✓ Searcher hook
- ✓ Hydraulic winch 2200lbs/4400lbs/ 8800lbs
- ✓ Non-marking tracks
- ✓ Extending tracks
- ✓ Fast Idle automatic
- ✓ Storage boxes
- ✓ Special painting
- ✓ Special electric motor
- ✓ Vacuum lifter with remote control



## C6 set-up and dimensions



C1 XXXX CAPACITY BOOM WITHIN 50° OF TURRET ROTATION

**HOEFLON®**

1-844-UP EQUIP.CA



## C6 / C6e

**29.5" WIDTH**  
**6940 LBS CAPACITY**  
**52' LIFTING HEIGHT**

### C6 Specifications

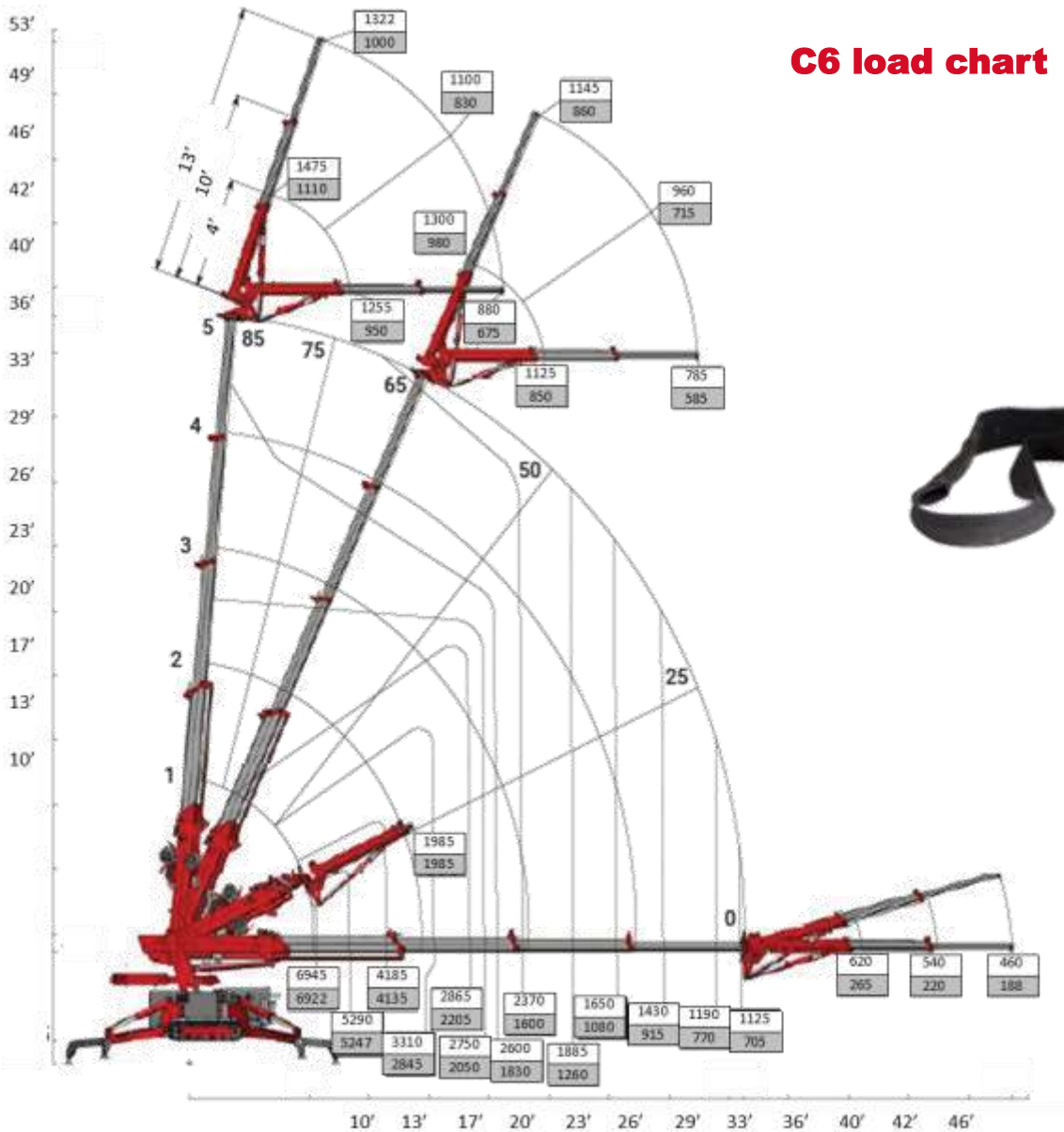


Max lift height with hydraulic telescopic Jib	52'
Max lift height without jib	38'
Max capacity	6940 lbs @ 6' radius
	5280 lbs @ 10' radius
	2200 lbs @ 20' radius
	1122 lbs @ 30' radius
Horizontal outreach	without jib 1157 lbs @ 33' out
	with jib 465 lbs @ 45' out
Available configurations	Yanmar diesel water cooled
	Full lithium battery
	Add-on 4 hp electric motor
Minimum size in travel position	29.5"w x 105"l x 67"h
Maximum width with extended carriage	42"
Travel speed	Infinite proportional remote
	+ 2 RPM speed. Up to 1,88 MPH
Operational weight without jib	5840 lbs
Operational weight with jib	6170 lbs
Counterweight	Variable deployment upon load
Maximal footprint on outriggers	165" x 173"
Minimal footprint on outriggers	32" x 177"
Outriggers set-up possibilities	
	With "infinite positioning" 7200 Possibilities
	With standard outriggers 48 Possibilities
Outriggers set up standard	3 positions each: 0°/45°/90°
Outriggers set up optional	Infinite positions 0° to 90°
Outriggers telescopic beam	Multiple, pinned or hydraulic

### C6 Features and options

- ✓Wireless remote for boom, outriggers and drive
- ✓LCD display on remote control
- ✓Reak time 'on screen' parameters
- ✓Glow plugs and winter start package
- ✓Pick and Carry capability with longer carriage
- ✓Searcher hook
- ✓Full hydraulic telescopic jib 3 booms
- ✓Manual jib 36" x 30° adjustable
- ✓Continuous slewing turret
- ✓Hydraulic winch 2200lbs/4400lbs/ 8800lbs
- ✓Telescopic outriggers
- ✓Telescopic outriggers Full hydraulic
- ✓Curved Outriggers end-tips
- ✓Swing Out outriggers, 3 positions 0° / 45° / 90°
- ✓Swing Out outriggers, with infinite rotation ( each 1°)
- ✓Non-marking tracks
- ✓Extending tracks
- ✓Fast Idle automatic

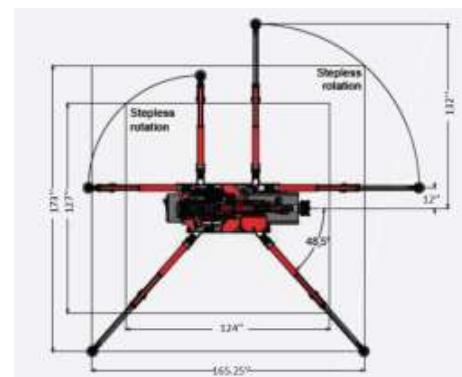
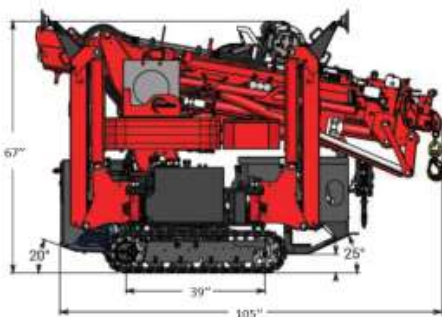
**C6 load chart**



C6

XXXX	CAPACITY WITH OUTRIGGERS EXTENDED
XXXX	CAPACITY WITH OUTRIGGERS RETRACTED

**C6 set-up and dimensions**



# C10 / C10e

**31.5" WIDTH  
8810 LBS CAPACITY  
72' LIFTING HEIGHT**

## C10 Specifications

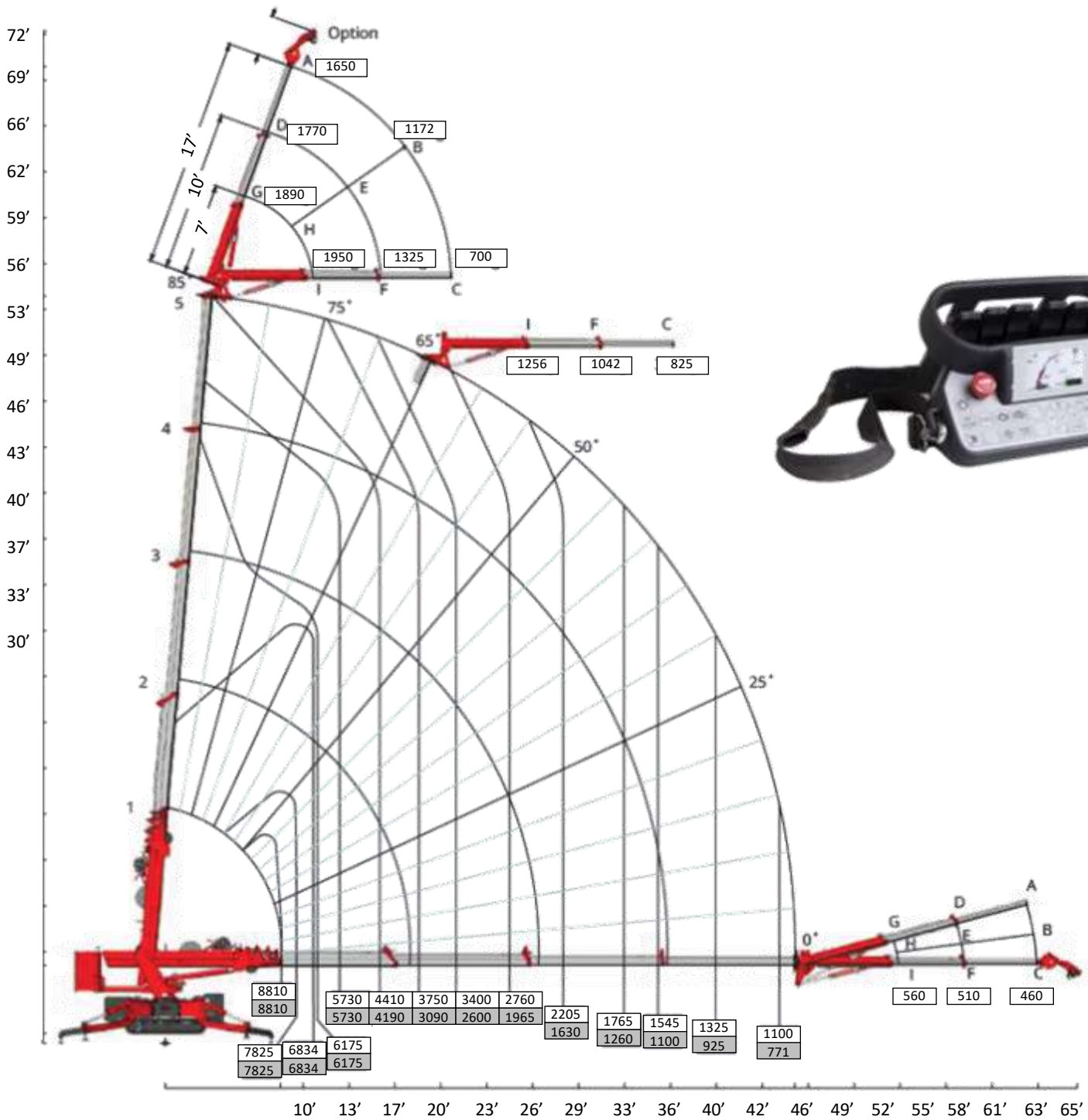
Max lift height with hydraulic telescopic Jib	72'
Max lift height without jib	53'
Max capacity	8810 lbs @ 6' radius
	6380 lbs @ 10' radius
	3740 lbs @ 20' radius
	2200 lbs @ 30' radius
Horizontal outreach	without jib 1100 lbs @ 45' out
	with jib 465 lbs @ 65' out
Available configurations	Yanmar diesel water cooled
	Full Lithium Ion
Minimum size in travel position	31.5"w x 151"l x 78"h
Maximum width with extended carriage	43"
Travel speed	Infinite proportional remote
	+ 2 speed. 1,88 MPH
Operational weight without jib	8696 lbs
Operational weight with jib	10358 lbs
Counterweight	Variable deployment upon load
Maximal footprint on outriggers	180" x 180"
Minimal footprint on outriggers	36" x 184"
Outriggers set-up possibilities	80 Possibilities
Outriggers set up standard	5 positions each: 0° to 90°
Outriggers telescopic beam	Multiple positions, pinned



## C10 Features and options

- ✓ Wireless remote for boom, outriggers and drive
- ✓ LCD display on remote control for live chassis angle, boom and jib angle, height + reach, load
- ✓ Glow plugs and winter start package
- ✓ Searcher hook
- ✓ Full hydraulic telescopic jib 3 booms
- ✓ Manual jib 36" x 30° adjustable
- ✓ Continuous slewing turret
- ✓ Hydraulic winch 2200lbs/4400lbs/ 8800lbs
- ✓ Telescopic outriggers
- ✓ Swing Out outriggers, 5 positions 0° to 90°
- ✓ Swing Out outriggers, with infinite rotation ( each 1°)
- ✓ Non-marking tracks
- ✓ Extending tracks
- ✓ Fast Idle automatic
- ✓ Storage boxes
- ✓ Special painting

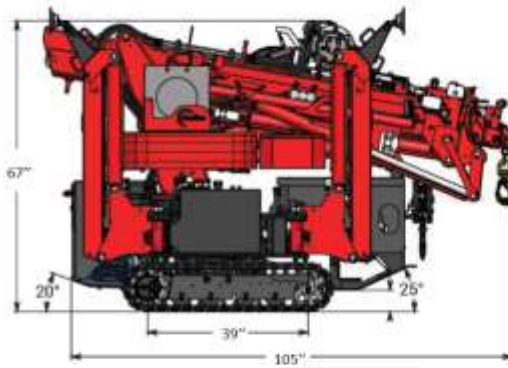
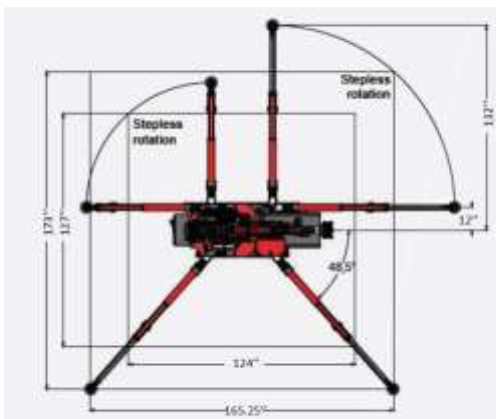




**C10**

XXXX	CAPACITY WITH OUTRIGGERS EXTENDED
XXXX	CAPACITY WITH OUTRIGGERS RETRACTED

## C10 set-up and dimensions



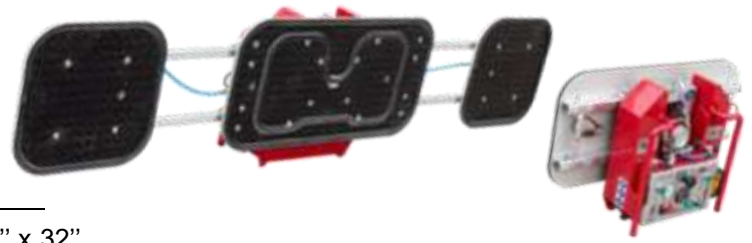
**HOEFLOON®**

1-844-UP EQUIP.CA

## COMPACT CRANES



## VL Vacuum lifter



Lifting capacity	1100 lbs
Suction cup size	Main 16" x 32"
	Secondary 2 cups of 16" x 16"
Total size with all cups installed	16" x 82"
Rotation	360° + 90° side tilt for glass roofing
Rechargeable battery autonomy	9 hours

## TC1 Tracked carrier



Max capacity	2640 lbs
Net weight with battery	1100 lbs
Dimensions	57" X 31.5" X height 16.5"
Optional deck rotation	360°
Battery and charger	24Vdc with 110-220AC charger
Charger	110V or 220V
Max slope travel ability	Climbing 25°
	Sideway 20°
Remote control	Wireless with 2 rechargeable battery / 300 feet range

## MT C10 Multi tool

Available in many configuration - Beam Grabber  
- Forks  
- Vacuum



### Contact us

Toll free 1-844-873-7847 (1-844-UPEQUIP)

Local 514-360-7191

Fax 450-583-3434


### Write us

Parts [parts@upequip.ca](mailto:parts@upequip.ca)

Service [service@upequip.ca](mailto:service@upequip.ca)

Sales [info@upequip.ca](mailto:info@upequip.ca)



A red compact tracked crane is shown in a wooded area, lifting a large tree trunk. The crane has a long, articulated boom and is mounted on a tracked chassis. A worker is visible in a bucket at the end of the boom. In the background, another similar crane is visible, and the scene is surrounded by dense green trees under a clear blue sky.

# Compact tracked cranes

**HOEFLON<sup>®</sup>**

**UP**  
EQUIP