

CAPABILITY

- 101' working height
- 48' horizontal reach with 265 lbs
- 510 lbs lift capacity
- Below ground level reach
- Outriggers set-up in 9 feet alley
- 35 inches overall width retracted
- **NO custom made trailer required**
- Std 12Volts electrical system
- **Work sideway in narrow stance**
- Super low ground pressure
- Live hydraulic ground controls

101-48AJ

ARBORIST PACKAGE STANDARD FEATURES

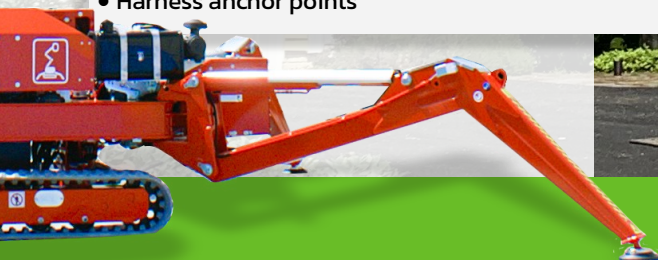
- | | |
|-------------------------------------|---|
| • Kubota diesel + electric AC motor | • Movement alarm |
| • Full hostile package protection | • One-man <i>Easy Entry</i> ™ fiberglass basket |
| • Wireless radio remote control | • AC power to basket |
| • Outriggers control from remote | • Air-Water line to basket |
| • Long travel outriggers | • Proportional controls |
| • Self leveling outriggers | • Hour meter |
| • Hydraulic basket rotator | |

POWERTRAIN OPTIONS

- Kubota diesel + AC motor (standard)
- Kubota diesel + Lithium Ion

SAFETY

- Basket anti over-load system
- Active envelope stability management system with redundant sensors
- Easy to read operational pilot lamps
- Wind safe up to 28Mph (45Kph)
- Solid state simple electrical components
- Proportional joystick controls for intuitive and precise boom movements
- Smooth and automatic basket leveling
- Harness anchor points

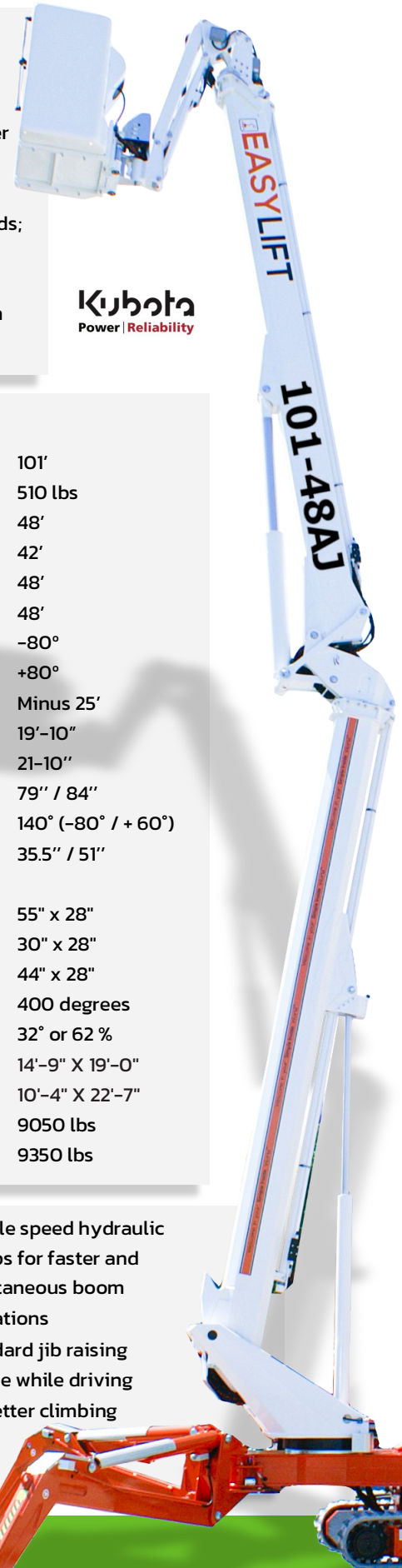


OPTIONS

- Non-marking soft rubber tracks
- Special painting
- Working lamp on basket
- Two-Men aluminium basket
- Two-Men *Easy Entry™* fiberglass basket
- Outriggers "sinking" alarm
- Teflon pads kit (4) for stabilizers;
- Strobe light (beacon)
- Casters on basket
- Winter start package

RELIABILITY

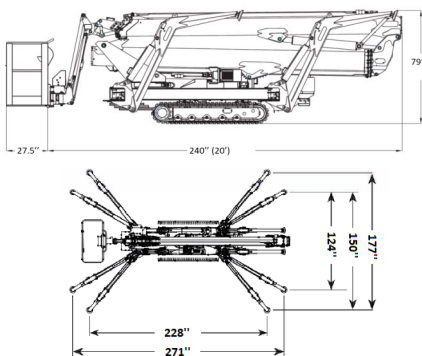
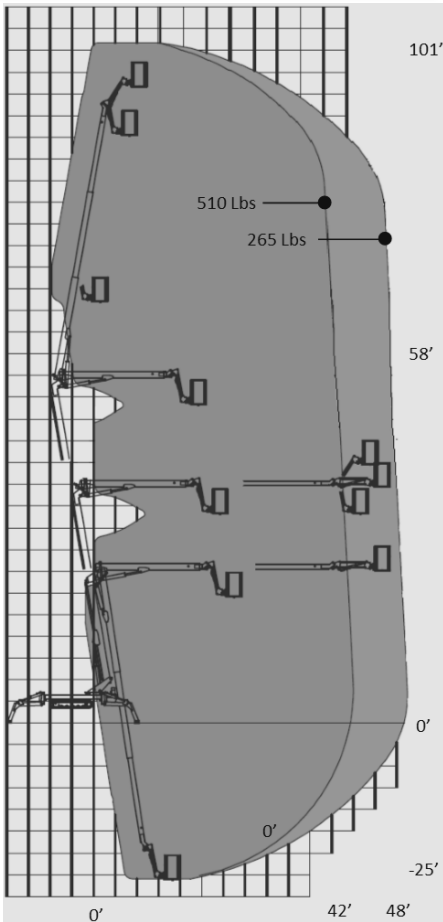
- High tensile steel boom Domex SSAB
- High quality components like Marzocchi, Kubota, Sauer Danfoss, Telemecanique, Finder
- Patented internal telescopic power-track for easier replacement of components
- External adjustable telescopic boom wear pads; no shimming required
- High quality powder coat paint
- Easy to use emergency boom descent system
- Emergency recovery system for drive



Kubota
Power | Reliability

DIMENSIONS AND SPECS

| | | |
|--|-------------------------------------|---------------------|
| • Working height | | 101' |
| • Basket capacity | | 510 lbs |
| • Horizontal reach | with 265lbs | 48' |
| | with 510lbs | 42' |
| | With outriggers in standard setting | 48' |
| | Front / Rear in narrow setting | 48' |
| • Jib articulation | Down | -80° |
| | Up | +80° |
| • Below ground reach | | Minus 25' |
| • Length | without basket | 19'-10" |
| | with basket | 21'-10" |
| • Height when driving | | 79" / 84" |
| • 5 feet length articulated jib motion | | 140° (-80° / + 60°) |
| • Min / Max width | | 35.5" / 51" |
| • Basket dimensions (L x W x H) | Aluminum | 55" x 28" |
| | One man fiber | 30" x 28" |
| | Two men fiber | 44" x 28" |
| • Turret rotation | | 400 degrees |
| • Max slope travel ability | | 32° or 62 % |
| • Outriggers footprint | Standard | 14'-9" X 19'-0" |
| | Narrow | 10'-4" X 22'-7" |
| • Total weight | Diesel | 9050 lbs |
| | Diesel + Lithium | 9350 lbs |



PRODUCTIVITY

- Work side way even in narrow mode
 - Top mount lifting points for crane
 - 140° amplitude articulated jib
 - High departure angle for climbing
 - High ground clearance
- NO custom made trailer required**

- Double speed hydraulic pumps for faster and simultaneous boom operations
- Standard jib raising enable while driving for better climbing

Simple Inside™