



**RELIABLE ATRIUM LIFTS**  
**TRACKED LIFTS**

**2024**

*Simple Inside™*

1-844-**UP** EQUIP.CA

# WHO WE ARE

**Since 2001**, UPequip is specialized in challenging access solutions. It is strongly embedded in our DNA to find a solution for any given access defiance. We are dedicated to provide customers easy, safe and reliable equipment to access hard-to-reach working areas. We strive to be an important part of our customers daily success and overall productivity.

We, at UPequip are committed to supply the best customer service and spread usage of the simplest, safest and fairest priced compact tracked lifts.

Our team is composed of highly qualified technicians who's passion for learning never come to an end. The knowledge and experience we have gathered over time is invaluable. Not only do we understand perfectly how atrium compact tracked spider lifts are built, we know how to help and explain when operational and technical issues arise.



# DID YOU KNOW

For several years, we have been recognized as one of the fastest growing companies of any trade in North America and THE fastest growing Aerial Lift supplier. Our phenomenal growth has not been realized by any acquisitions of other companies but in an organic way. Our hard work to offer the best of ourselves and to stay focused on what made our success over the years; Listening, understanding and supporting.

**Did you know that UPequip is among the fastest growing companies in North America ?**

***Simple Inside™***

# OUR CAPABILITY

- Experience** A humble total of 142 years of crew experience in equipment based in North America; mechanics, sales and customer service. This is what we put at your disposal. More than a decade of strong and stable relationship with the same manufacturer Easy Lift and 21 years as a company. There's nothing that we cannot do !
- Inventory** Constant and increased production capability is the key to satisfy the avid demand for our growing brand. A large warehouse stuffed with parts available here in North America ensure you that your unit will be back and running as soon as possible. With more than 15, 000 parts available off the shelf, we ship your order fast track with an impressive 99,1% fill rate (audited 2020)
- Facility** With more than 180 000 square feet of production and maintenance facilities, we are still growing and heading to expansion stage 4 and 5 to accommodate strong demand. State of the art workshop is the core of all production, assembly, repairs, maintenance and parts shipping.
- Support** Our response to online service request is second to none. We gather all required information in order to diagnose a problem and provide end users with both knowledge and parts to perform the repair.
- Knowledge** The experience and comprehension of units we've gathered over the years allow us to teach almost anyone to maintain and fix their units. There is no extensive mechanical or electrical skills required on your end to perform the task unless you decide to outsource it.
- Ownership** Your problem becomes our problem and we will do all that's required to address it. Meanwhile, our solutions must also become your solutions. It is a team work between you and us and goes both ways. Together, we will make miracles.



# HOW WE BUILD THEM

- ✓ Superior structural steel laser cut and CNC hydro formed construction with SSAB Domex™ boom structure
- ✓ Oversized and heat treated corrosion resistant pivot points and linkages
- ✓ Robust undercarriage with serviceable idler wheels, hubs and motors
- ✓ Heavy-duty rubber tracks with high tensile sealed internal steel cables with curbshield protection
- ✓ Longer tracks for increased climbing stability and better weight distribution for sensitive ground
- ✓ Amazing departure angle to manage steepest hills
- ✓ Solid-state 12 Volts components and heavier gauge wiring
- ✓ Longer travel outriggers to set anywhere and work over the bed of your truck or trailer

We only use the most durable components on the market. But durable is not enough; each part is carefully selected for its ease of replacement for the end user, a stable and proven availability and the ability to service it without changing everything. Every design detail has been thought to make equipment easy to repair, enjoyable to use, more productive and equipped with unique features.

- ✓ Exclusive telescopic booms wear pads made of super slick UHDPE
- ✓ Long lasting paint; white blasted and oven baked powder coat process
- ✓ Electro plated galvanized covers and accessories for added protection
- ✓ Superior grade hardware



facebook

These guys have top notch customer service and emergency response contact. They sell machines that are simple. Rarely ever fail and are simple to fix. Also have redundant systems that allow you to keep working no matter what. Martin and Alain are great and true professionals in the business. I wish other equipment dealers would conduct themselves this way. I'm in Florida and it is no problem operating with this Canadian dealer at all. Would highly recommend.

Joe Truscello Sgt T's Tree, FL

Owner of 61-36A



**Simple Inside™**

**THE BEST WARRANTY**

We will be there to help you fix it every step of the way so you can get back to work ASAP even long after the warranty is over. That is the UPequip promise.

- ✓ 1 year – Parts & Service – UNLIMITED HOURS
- ✓ 2 years – Diesel Motor – UNLIMITED HOURS
- ✓ 3 years – Structural components – UNLIMITED HOURS

Easy Lift is by far the safest, better built and most reliable series of compact tracked lifts available on the market. With that being said, we are equally confident that despite all your efforts and good care it will eventually break, self-inflicted or not. Our ultimate goal is to get it back online within the shortest period of time possible. To do this, we will need your help and cooperation. We will be a team, not opponents in the resolution of issues.



**We have so much confidence in the quality of our compact lifts that we offer a full 1 year warranty, regardless of hour meter + 3 full years on booms structure.**



**Super strong Octogonal shaped upper and lower booms**

## THE POWER OF STEEL

The SSAB-DOMEX Sweden ally steel coupled with the Italian engineering, the dedicated craftsmanship and the octagonal shape of telescopic booms provides **Easy Lift units a 100% safety record.**

Most importantly it brings a pleasing stiffness and unequalled rigidity for such small compact units.

You may get seduced by fancy catching words read elsewhere, but make sure you compare what matter most: the warranty offered. The power of SSAB DOMEX steel brings together the best product that is proved safer, far more reliable and backed up with a simple and unconditional warranty.

# WHAT MEANS *Simple Inside*™

Simple Inside™ is a lot more than a few words, a slogan or a Trademark. It is embedded in our corporate DNA and our fundamental way of conducting business. Simplicity doesn't stop at the choice of components or engineering of units. It is all the way down to the operation, official documents, procedures and human interactions. When everything is put together, it's a breeze.



Kubota



HONDA  
ENGINES



## THE ENGINES

Hatz and Kubota diesel engines are the toughest on earth, built for the most hostile areas, remote countries and harshest conditions.

Air Cooled diesel and Honda gas engine is a perfect match for the smaller units and are virtually maintenance free.

Maintenance schedule is clear and easy to follow. Keep it simple and enjoy.

Want something different ? We can also build your unit with Honda propane or Lithium batteries. Even multiple configuration at the same time.

EASY  
ENGINE  
SERVICE

EASY  
HYDRAULIC  
SERVICE

## HYDRAULIC SYSTEM

We use only SAE standards pipe North American hoses and fittings; **no metric hoses or fittings are used.** All units are equipped with the best high pressure hydraulic filtration system. Instead of filtering the return lines like many others, we strain flow inward the system to prevent any contamination and protect the system. Large capacity hydraulic tank with bottom drain plug and sight glass to confirm level. Dedicated pressure ports for pressure reading is a standard feature for all units.

All electric over hydraulic valves are equipped with built-in LED to confirm when the oil goes through.



Level sight glass



LED light confirmation



Without a doubt purchasing a lift from UPequip was one of the most lucrative purchases in my career . As a 20 year tree climbing veteran it was a nice break up in the daily grind to not have to climb everything all the time. I love climbing but you simply cannot beat the production due to access and capabilities of the compact telescopic boom lift. It goes places and does things that have diversified my business and definitely increased income. The support from UPequip is second to none. They walk you through any issues with a phone call mostly, if on a rare occasion they occur. I love my easy lift and will purchase another as soon as possible

Aaron Cipoletti Cipoletti Tree Service, NJ

Owner of 70-36AJ



*Simple Inside*™



Laser-cut tabs for shackles



**EASY  
HAULING**

Most of Easy Lift unit can be hauled by a standard 1/2 ton pick-up truck

## HAULING UNIT

All Easy Lift Reliable Arborist Partners series can be hauled and transported with standard width beds trucks or trailers. Using the outriggers to load/unload and to work on top of transport makes the Easy Lift the most versatile choice, with the least amount of mandatory custom-made requirements. Tie down points are overbuilt, located low on the chassis and easily accessible from both sides of trailer or truck. Loading and unloading is immensely improved with the grade ability of all Easy Lift units. These elements contribute immediately to your overall productivity.



Easy tracks swap or replacement

## THE CHASSIS

Our drive hubs are serviceable and use standard mineral gear oil. Unlike many products on the market, our heavy duty Internal brake system don't require fancy oil or special additives.

The track tensioning system is simple to release and re-tight with an exclusive built-in valve. All carriage idler wheels are serviceable with common parts from your local market.

**EASY  
CARRIAGE  
SERVICE**

## TRACKS AND UNDERCARRIAGE

- ✓ Best of the best tracks made with internal Iron Core plus high tensile steel cables and curbshield protection
- ✓ Solid planetary drive hubs with easy to remove top inspection cover,
- ✓ Built-in automatic and serviceable brake system using mineral gear oil.
- ✓ Extra rigid boxed track frame made of thick high psi carbon steel.
- ✓ Track tensioning system is simple to release and re-tighten
- ✓ Idler wheels are serviceable with common parts from the market
- ✓ Low torque and fast drive hubs on many models



Accessible components



Easy to service tensioning system



High torque drive hubs



Strong and long lasting tracks

# RENTAL/ ATRIUM series



**Protected and sealed main control box**

## THE ELECTRICAL SYSTEM

Our simple 12V electrical system use high quality and simple basic market components.

Wires and harnesses are numbered and color coded, made from the best quality heavy gauge available.

All critical junctions are crimped, soldered and weather-proof heat shrinked for long term reliability and durability. Limited usage of 'plug and play' connections to avoid corrosion and loose terminals over time.

Control boxes, operational and safety switches are well protected with high IP grade protection, sealed tight and can be power washed.

Our standard automotive 12 volts system will allow you to charge or jumpstart your unit without any hassles.

No fancy parts, none or limited electronics, temperamental and sensitive controllers or magic boxes.

## REMOTE CONTROL WIRELESS

- ✓ Waist or neck strap
- ✓ 2x Li-On rechargeable battery
- ✓ On-board automatic charger
- ✓ Emergency back-up cable
- ✓ Emergency kill switch + Start
- ✓ Drive proportional paddlesticks
- ✓ Outriggers self-levelling
- ✓ Individual outriggers switches
- ✓ Boom proportional paddlesticks



## REMOTE CONTROL WIRED

- ✓ Waist or neck strap
- ✓ Heavy gauge numbered harness
- ✓ Quick-disconnect plug
- ✓ Emergency kill switch
- ✓ Drive Joystick
- ✓ Outriggers self-levelling
- ✓ Individual outriggers switches
- ✓ Idle control
- ✓ Key switch to start and stop

## BASKET CONTROLS

- ✓ Operational colored LED pilot lamps
- ✓ Seal tight joysticks or real hydraulic levers.
- ✓ Automatic basket leveling
- ✓ Automatic anti-restart ignition function to prevent starter damages
- ✓ Red mushroom emergency kill switch
- ✓ AINSI A92 regulation ready with basket overload



**Electro Hydraulic**



**Full Hydraulic**

***Simple Inside™***

# BUILT WITH EXCLUSIVE FEATURES

## STABILITY SYSTEM

- ✓ Unique active stability management system using simple mechanism and redundant common switches
- ✓ Built-in each outriggers and pre-calibrated so you don't have to worry about
- ✓ Heavy protection cover to prevent fall-off limbs
- ✓ Controlled by standard automotive relays that disables potentially dangerous movements
- ✓ Wind safe up to 28MPH



Real hydraulic  
ground control levers



## GROUND CONTROLS

- ✓ Water sealed components can be pressure washed
- ✓ Easy to read and understand operational colored LED lamps on ground control box
- ✓ Real hydraulic ground controls levers; No electrical switches, **no touch screen to press**

## SELF LEVELING OUTRIGGERS

Multiple position swing-out outriggers to work virtually everywhere

- ✓ Narrow mode pattern
- ✓ Standard mode pattern
- ✓ Heavy duty swing-out locking pins

Long travel outriggers will raise tracks nearly 4 feet of the ground

- ✓ Set unit with ease on rough terrain and around obstacles
- ✓ Set unit over your truck or trailer
- ✓ Use it like a bucket truck or tow behind
- ✓ Capability to set over 102" wide step deck highway trailer



Standard, narrow or mixed setting



Long travel outriggers

# BUILT WITH EXCLUSIVE FEATURES

### HOSTILE AND DAMAGE PROTECTION

- ✓ Real thick outriggers cover plate to protect cylinder
- ✓ Over-protected outriggers swing out switches
- ✓ Heavy duty protection over stability system and switches
- ✓ Ground controls heavy duty and lockable
- ✓ Covers or heavy protection plate
- ✓ Basket controls BBQ lid style metal cover
- ✓ Covers for safety switches and components



Stability switches HD galvanized covers



Outriggers thick plate protection



Turret cover



Ground control



BBQ lid style

### FAST HYDRAULIC SYSTEM AND COMPONENTS

- ✓ Double pumps on combustion side + double pumps on AC electric side for optimal flow distribution
- ✓ Superior oil filtration system installed on pressurized side to trap debris before entering the system
- ✓ Double safety automatic locking check valve on all hydraulic cylinders
- ✓ Standard hydraulic hoses 2 and 3 layers wire-braided according to size
- ✓ Dedicated pressure ports for pressure reading, monitoring and troubleshooting
- ✓ Live hydraulic function manifold at ground controls
- ✓ No hard-to-find metric fittings
- ✓ Large capacity hydraulic tank with sight glass to control level and bottom drain plug
- ✓ Heavy duty protective cover on all critical components
- ✓ All electric over hydraulic valves equipped with built-in LED to confirm when the oil goes through
- ✓ No electrical components or sensors built in/on cylinders or inside any cylinder pins

**Simple Inside™**

# BUILT FOR PRODUCTIVITY

## UNSURPASSED PERFORMANCE

- ✓ Amazing departure angle to get passed steepest hills
- ✓ Self-levelling long travel outriggers to set anywhere
- ✓ Best horizontal outreach with increased basket capacity
- ✓ Multi position outriggers standard and narrow
- ✓ Longer articulated jib with more amplitude up to 140°
- ✓ The *Simple Inside*™ reliability and simplicity
- ✓ Get inside any building thru standard access



Climb everything with the long tracks



## ARTICULATED JIB

- ✓ Enhanced articulation to reach where required
- ✓ Special 'raise while driving' switch allows to lift the articulated jib at full height to clear steep climbing or tight turning



Jib raise while driving



High amplitude articulated jib

## OPTIONS

- Self-levelling outriggers
- Full hostile package protection
- Emergency descent 12V electric pump
- Wired remote control
- Radio remote control
- Non-marking soft rubber tracks
- Special painting
- Working lamp on basket
- Outriggers "sinking" alarm
- Teflon pads kit (4) for stabilizers;
- Strobe light (beacon)
- Casters on basket
- Winter start package

## POWERTRAIN OPTIONS

- Honda gas + AC motor (standard)
- Hatz Diesel + electric AC motor
- Honda Propanes + AC motor
- Lithium Ion

## RELIABILITY

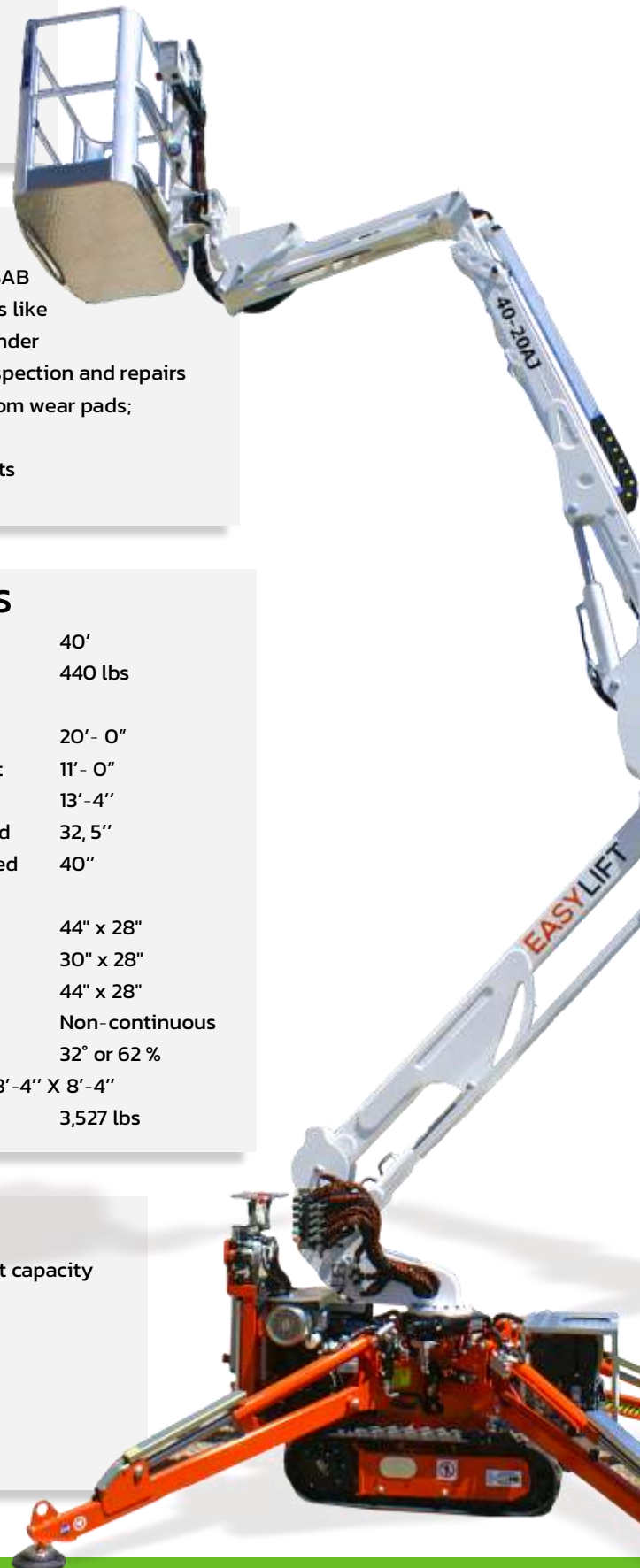
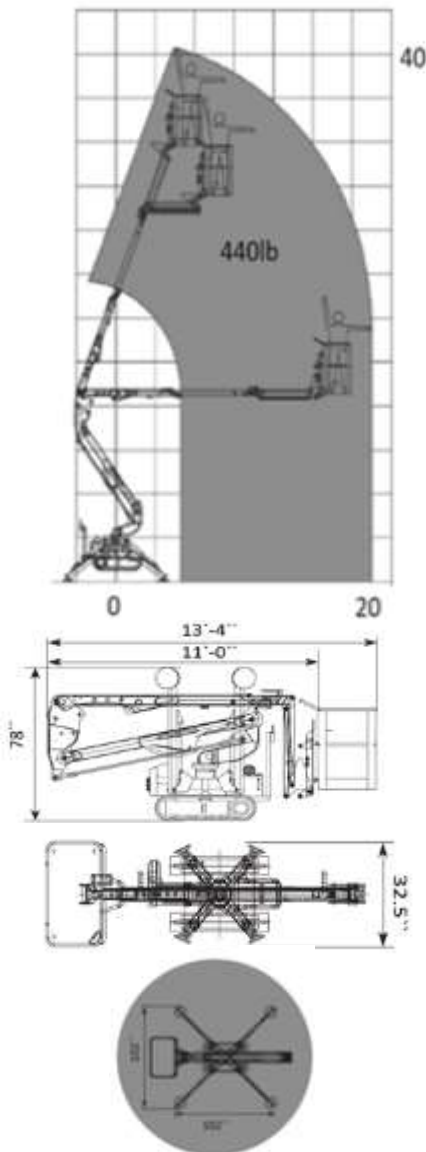
- High tensile steel boom Domex SSAB
- Standard high quality components like Sauer Danfoss, Telemecanique, Finder
- External power track for easier inspection and repairs
- External adjustable telescopic boom wear pads; no shimming required
- Greasable fittings in all pivot points
- High quality powder coat paint

## DIMENSIONS AND SPECS

Working height	40'
Basket capacity	440 lbs
Maximum horizontal side reach	
Unrestricted	20' - 0"
Minimum length	
without basket	11' - 0"
With basket	13' - 4"
Minimum width	
tracks retracted	32, 5"
Tracks extended	40"
Basket dimensions (L x W x H)	
Aluminum	44" x 28"
One man fiber	30" x 28"
Two men fiber	44" x 28"
Turret rotation	Non-continuous
Max slope travel ability	32° or 62 %
Outriggers footprint	8' - 4" X 8' - 4"
Total weight	3,527 lbs

## PRODUCTIVITY

- Work at full reach with max basket capacity
- Easy to haul at less than 3600 lbs
- Top mount lifting points for crane
- Tie down anchor points
- High departure angle for climbing
- **NO custom made trailer required**
- High ground clearance



**Simple Inside™**

# 40-20AJ

ULTRA COMPACT

## CAPABILITY

- 40' working height
- 20' horizontal reach
- 440 lbs lift capacity
- Extra low ground pressure
- Fit thru a single door
- Ultra small outriggers footprint
- Fully hydraulic basket control
- Fully hydraulic ground control
- Full horizontal outreach at max cap.

## STANDARD FEATURES

- Choice of motorisation
- Hydraulic drive with proportional levers
- Hydraulic basket rotator
- Movement alarm
- Black rubber tracks
- Aluminium basket- Detachable
- Basket rotation hydraulic
- AC power to basket
- Air-Water line to basket
- Proportional controls
- Hour meter
- Manual emergency descent system
- Jjb raising enable while driving for better clearance while climbing
- Top mount lifting points for crane

## SAFETY

- Active stability management system with redundant system
- Easy to read operational pilot lamps
- Wind safe up to 28Mph (45 Kph)
- Solid state and simple electrical + hydraulic components
- Proportional hydraulic for precise boom movements
- Smooth and automatic basket leveling + manual override
- Full hydraulic ground levers
- Harness anchor points

## OPTIONS

- Self-levelling outriggers
- Full hostile package protection
- Emergency descent 12V electric pump
- Radio remote control
- Non-marking soft rubber tracks
- Special painting
- Working lamp on basket
- Outriggers "sinking" alarm
- Teflon pads kit (4) for stabilizers;
- Strobe light (beacon)
- Casters on basket
- Winter start package

## RELIABILITY

- High tensile steel boom Domex SSAB
- Standard high quality components like Sauer Danfoss, Telemecanique, Finder
- External power track for easier inspection
- External adjustable telescopic boom wear pads; no shiming required
- Greasable fittings in all pivot points
- High quality powder coat paint

## POWERTRAIN OPTIONS

- Honda gas + AC motor (standard)
- Hatz Diesel + electric AC motor
- Lithium Ion

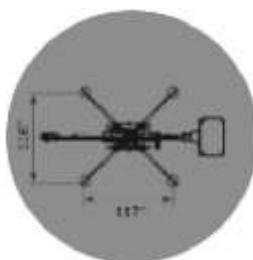
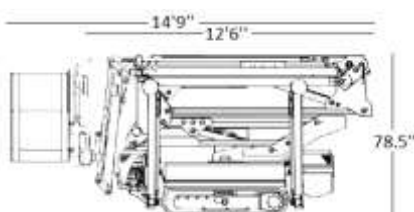
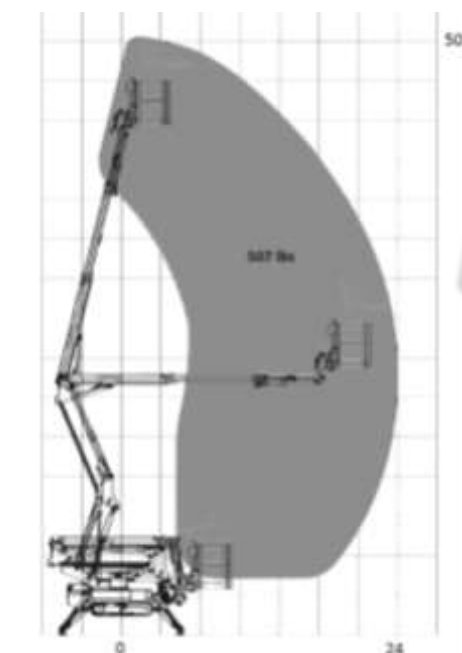


## DIMENSIONS AND SPECS

Working height	50'
Basket capacity	510 lbs
Maximum horizontal side reach	
Unrestricted	23' - 0"
Minimum length	
without basket	12' - 6"
With basket	14' - 9"
Minimum width	
tracks retracted	32, 5"
Tracks extended	40"
Basket dimensions (L x W x H)	
Aluminum	44" x 28"
One man fiber	30" x 28"
Two men fiber	44" x 28"
Turret rotation	Non-continuous
Max slope travel ability	32° or 62 %
Outriggers footprint	10'-3" X 10'-4"
Total weight	4, 410 lbs

## PRODUCTIVITY

- Work at full reach with max basket capacity
- Easy to haul at less than 4400 lbs
- Top mount lifting points for crane
- Tie down anchor points
- High departure angle for climbing
- **NO custom made trailer required**
- High ground clearance



**Simple Inside™**

# 50-23AJ

## CAPABILITY

- 50' working height
- 23' horizontal reach
- 510 lbs lift capacity
- Extra low ground pressure
- Fit thru a single door
- Ultra small outriggers footprint
- Fully hydraulic ground control
- Full horizontal outreach at max cap.

## STANDARD FEATURES

- Choice of motorisation
- Remote control wired
- Hydraulic basket rotator
- Movement alarm
- Black rubber tracks
- Aluminium basket- Detachable
- Basket rotation hydraulic
- AC power to basket
- Air-Water line to basket
- Proportional controls
- Hour meter
- Manual emergency descent system
- Jjb raising enable while driving for better clearance while climbing
- Top mount lifting points for crane

## SAFETY

- Active stability management system with redundant system
- Easy to read operational pilot lamps
- Wind safe up to 28Mph (45 Kph)
- Solid state and simple electrical and hydraulic components
- Proportional hydraulic joystick controls for intuitive and precise boom movements
- Smooth and automatic basket leveling + manual override
- Full hydraulic ground levers
- Harness anchor points



## OPTIONS

- Self-levelling outriggers
- Full hostile package protection
- Emergency descent 12V electric pump
- Wired remote control
- Radio remote control
- Non-marking soft rubber tracks
- Special painting
- Working lamp on basket
- Outriggers "sinking" alarm
- Teflon pads kit (4) for stabilizers;
- Strobe light (beacon)
- Casters on basket
- Winter start package

## POWERTRAIN OPTIONS

- Honda gas + AC motor (standard)
- Hatz Diesel + electric AC motor
- Honda Propanes + AC motor
- Lithium Ion

## RELIABILITY

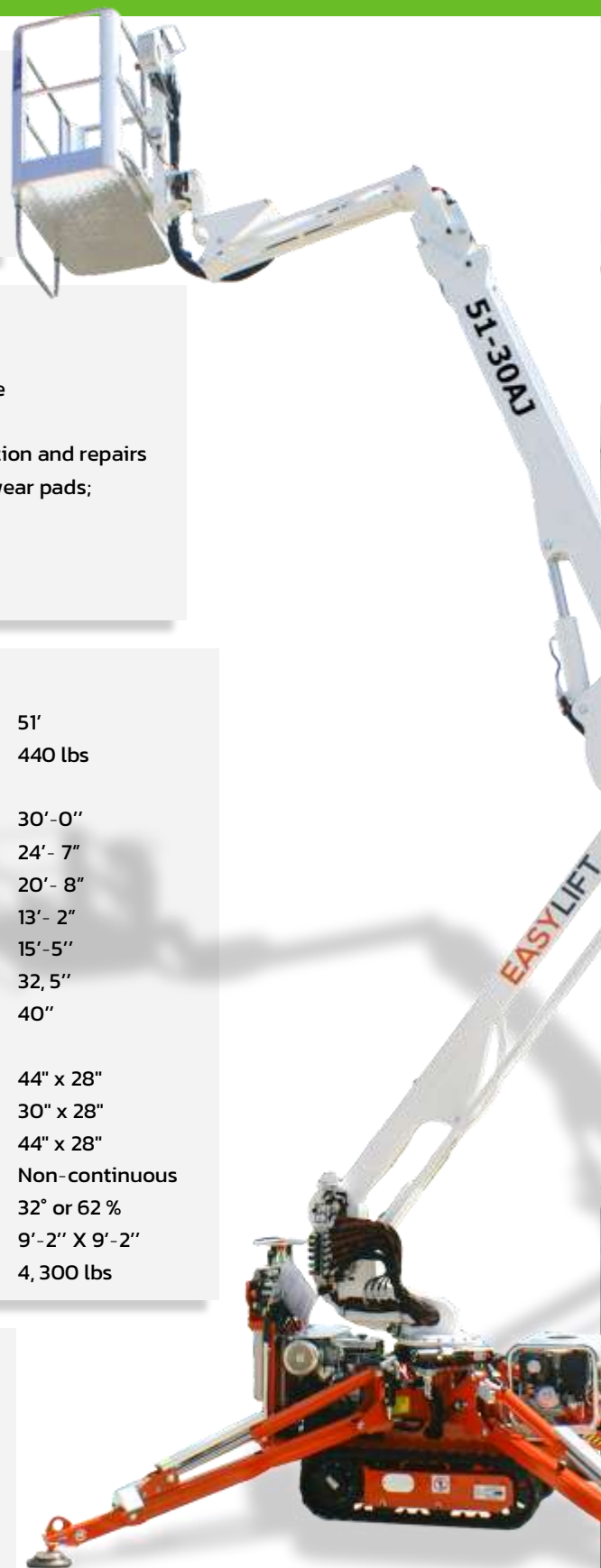
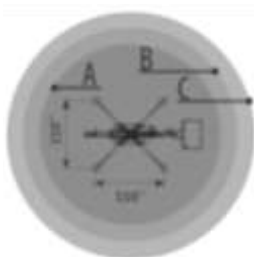
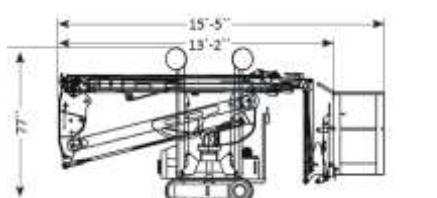
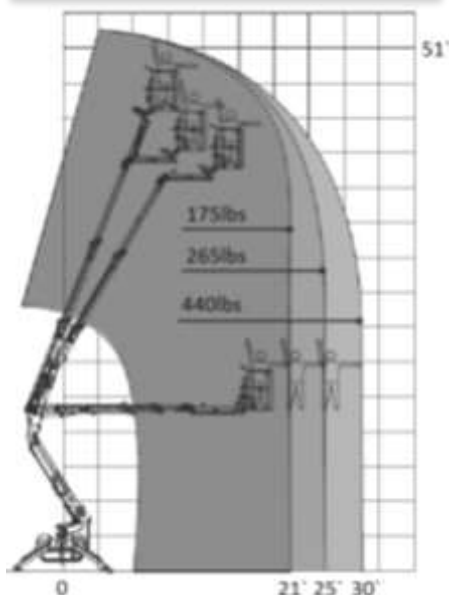
- High tensile steel boom Domex SSAB
- Standard high quality components like Sauer Danfoss, Telemecanique, Finder
- External power track for easier inspection and repairs
- External adjustable telescopic boom wear pads; no shimming required
- Greasable fittings in all pivot points
- High quality powder coat paint

## DIMENSIONS AND SPECS

Working height	51'
Basket capacity	440 lbs
Maximum horizontal side reach	
With 175 lbs	30'-0"
with 265 lbs	24'- 7"
with 440lbs	20'- 8"
Minimum lenght	
without basket	13'- 2"
With basket	15'-5"
Minimum width	
tracks retracted	32, 5"
Tracks extended	40"
Basket dimensions (L x W x H)	
Aluminum	44" x 28"
One man fiber	30" x 28"
Two men fiber	44" x 28"
Turret rotation	Non-continuous
Max slope travel ability	32° or 62 %
Outriggers footprint	9'-2" X 9'-2"
Total weight	4,300 lbs

## PRODUCTIVITY

- Triple upper telescopic boom
- Easy to haul at less than 4300 lbs
- Top mount lifting points for crane
- Tie down anchor points
- High departure angle for climbing
- **NO custom made trailer required**
- High ground clearance



**Simple Inside™**

# 51-30AJ

## CAPABILITY

- 51' working height
- 30' horizontal reach
- 440 lbs lift capacity
- Extra low ground pressure
- Fit thru a single door
- Ultra small outriggers footprint
- Fully hydraulic basket control
- Fully hydraulic ground control

## STANDARD FEATURES

- Choice of motorisation
- Hydraulic drive with proportional levers
- Hydraulic basket rotator
- Movement alarm
- Black rubber tracks
- Aluminium basket- Detachable
- Basket rotation hydraulic
- AC power to basket
- Air-Water line to basket
- Proportional controls
- Hour meter
- Manual emergency descent system
- Jjb raising enable while driving for better clearance while climbing
- Top mount lifting points for crane

## SAFETY

- Active stability management system with redundant system
- Easy to read operational pilot lamps
- Wind safe up to 28Mph (45 Kph)
- Solid state and simple electrical and hydraulic components
- Proportional hydraulic joystick controls for intuitive and precise boom movements
- Smooth and automatic basket leveling + manual override
- Full hydraulic ground levers
- Harness anchor points



## OPTIONS

- Self-levelling outriggers
- Full hostile package protection
- Emergency descent 12V electric pump
- Wired remote control
- Radio remote control
- Non-marking soft rubber tracks
- Special painting
- Working lamp on basket
- Outriggers "sinking" alarm
- Teflon pads kit (4) for stabilizers;
- Strobe light (beacon)
- Casters on basket

## POWERTRAIN OPTIONS

- Honda gas + AC motor (standard)
- Hatz Diesel + electric AC motor
- Honda Propanes + AC motor
- Lithium Ion

## RELIABILITY

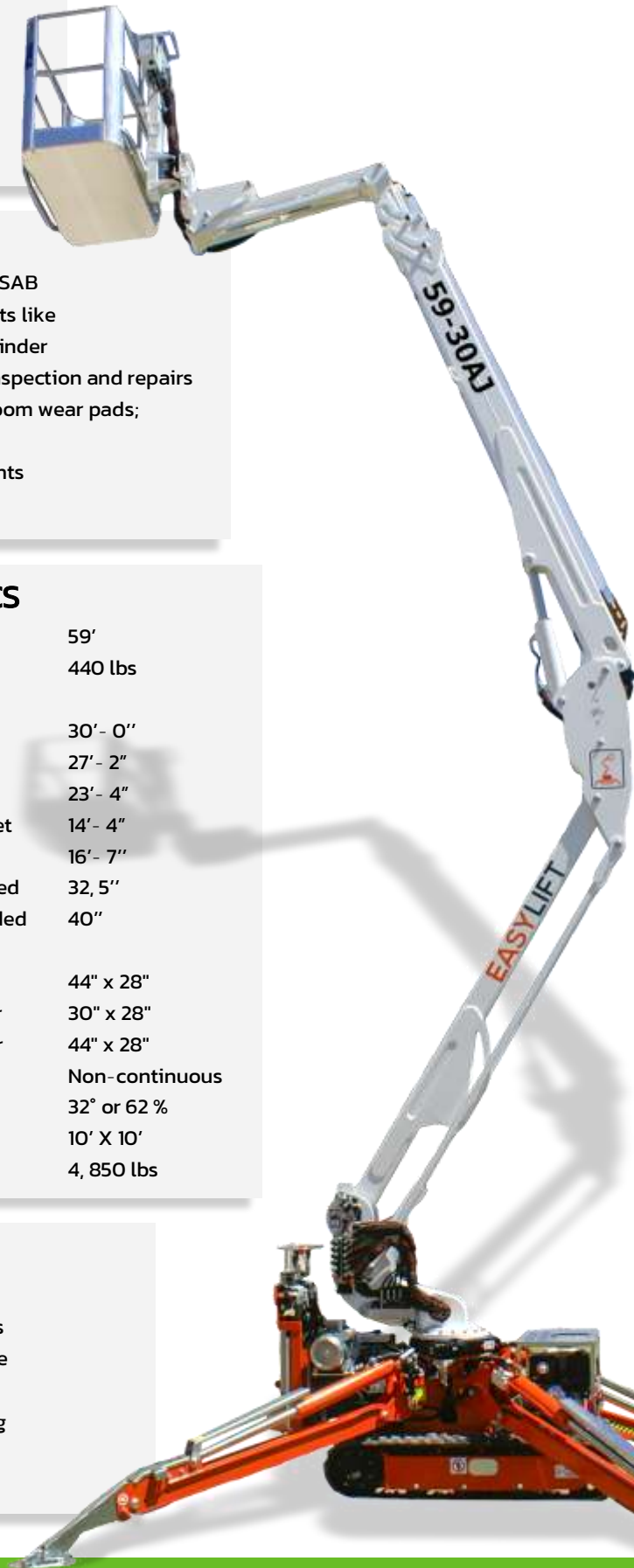
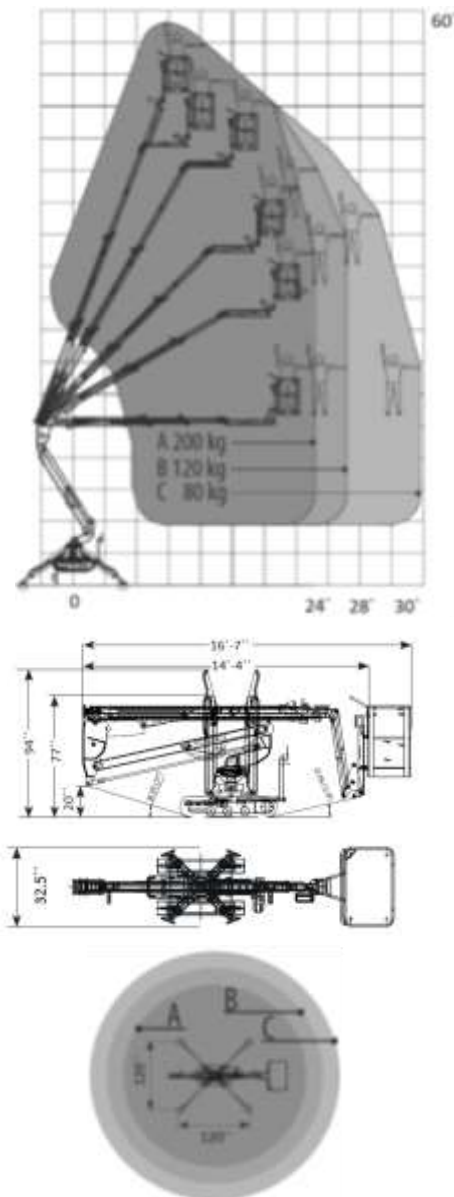
- High tensile steel boom Domex SSAB
- Standard high quality components like Sauer Danfoss, Telemecanique, Finder
- External power track for easier inspection and repairs
- External adjustable telescopic boom wear pads; no shimming required
- Greasable fittings in all pivot points
- High quality powder coat paint

## DIMENSIONS AND SPECS

Working height	59'
Basket capacity	440 lbs
Maximum horizontal side reach	
With 175 lbs	30' - 0"
with 265 lbs	27' - 2"
with 440lbs	23' - 4"
Minimum lenght	
without basket	14' - 4"
With basket	16' - 7"
Minimum width	
tracks retracted	32, 5"
Tracks extended	40"
Basket dimensions (L x W x H)	
Aluminum	44" x 28"
One man fiber	30" x 28"
Two men fiber	44" x 28"
Turret rotation	Non-continuous
Max slope travel ability	32° or 62 %
Outriggers footprint	10' X 10'
Total weight	4, 850 lbs

## PRODUCTIVITY

- Triple upper telescopic boom
- Easy to haul at less than 4850 lbs
- Top mount lifting points for crane
- Tie down anchor points
- High departure angle for climbing
- **NO custom made trailer required**
- High ground clearance



**Simple Inside™**

# 59-30AJ

## CAPABILITY

- 59' working height
- 30' horizontal reach
- 440 lbs lift capacity
- Extra low ground pressure
- Fit thru a single door
- Ultra small outriggers footprint
- Fully hydraulic basket control
- Fully hydraulic ground control

## STANDARD FEATURES

- Choice of motorisation
- Hydraulic drive with proportional levers
- Hydraulic basket rotator
- Movement alarm
- Black rubber tracks
- Aluminium basket- Detachable
- Basket rotation hydraulic
- AC power to basket
- Air- Water line to basket
- Proportional controls
- Hour meter
- Manual emergency descent system
- Jib raising enable while driving for better clearance while climbing
- Top mount lifting points for crane

## SAFETY

- Active stability management system with redundant system
- Easy to read operational pilot lamps
- Wind safe up to 28Mph (45 Kph)
- Solid state and simple electrical and hydraulic components
- Proportional hydraulic joystick controls for intuitive and precise boom movements
- Smooth and automatic basket leveling + manual override
- Full hydraulic ground levers
- Harness anchor points



## OPTIONS

- Self-levelling outriggers
- Full hostile package protection
- Emergency descent 12V electric pump
- Radio remote control
- Non-marking soft rubber tracks
- Special painting
- Working lamp on basket
- Outriggers "sinking" alarm
- Teflon pads kit (4) for stabilizers;
- Strobe light (beacon)
- Casters on basket
- Winter start package

## POWERTRAIN OPTIONS

- Hatz diesel + AC motor (standard)
- Honda gas + electric AC motor
- Lithium Ion + Gas or diesel engine
- Lithium Ion

## RELIABILITY

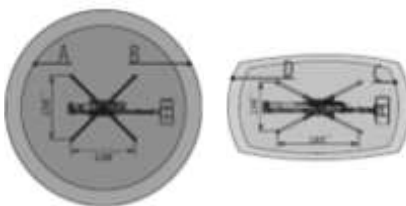
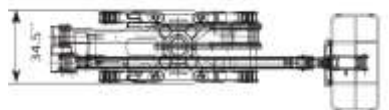
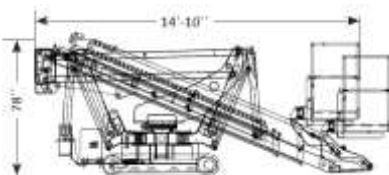
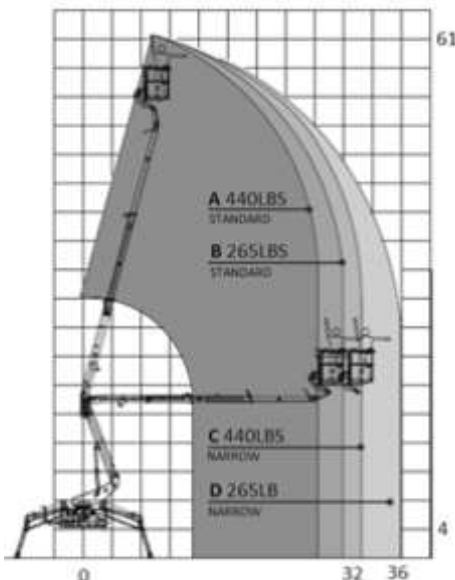
- High tensile steel boom Domex SSAB
- Standard high quality components like Sauer Danfoss, Telemecanique, Finder
- External power track for easier inspection and repairs
- External adjustable telescopic boom wear pads; no shimming required
- Greasable fittings in all pivot points
- High quality powder coat paint

## DIMENSIONS AND SPECS

Working height	61'
Basket capacity	440 lbs
Maximum horizontal side reach	
with 265 lbs	36' - 0"
with 440lbs	29' - 5"
Minimum length	14' - 10"
Travel position	16' - 2"
Minimum width	34.5"
Basket dimensions (L x W x H)	
Aluminum	55" x 28"
One man fiber	30" x 28"
Two men fiber	44" x 28"
Turret rotation	360 degrees
Max slope travel ability	32° or 62 %
Outriggers footprint Standard	11'-6" X 11'-6"
Narrow	8'-3" X 14'-7"
Total weight diesel	6 173 lbs

## PRODUCTIVITY

- Work side way even in narrow mode
- Easy to haul at only 6200 lbs
- Top mount lifting points for crane
- 4x tie down anchor points
- High departure angle for climbing
- **NO custom made trailer required**
- High ground clearance



**Simple Inside™**

## CAPABILITY

- 61' working height
- 36' horizontal reach
- 440 lbs lift capacity
- Multiple positions swing-out outriggers
- **Work sideways in narrow mode**
- Live hydraulic basket controls
- Live hydraulic ground controls

## STANDARD FEATURES

- Choice of motorisation
- Full hostile package protection
- Wired remote control
- Outriggers control from remote
- Long travel outriggers
- Hydraulic basket rotator
- Movement alarm
- Extra-long black rubber tracks
- Aluminium basket- Detachable
- Basket rotation hydraulic
- AC power to basket
- Air- Water line to basket
- Proportional controls
- Hour meter
- Manual emergency descent system
- Boom raising enable while driving for better clearance while climbing
- Top mount lifting points for crane

## SAFETY

- Basket anti overweight redundant mechanical switches
- Active stability management system with redundant system
- Easy to read operational pilot lamps
- Wind safe up to 28Mph (45 Kph)
- Solid state simple electrical components
- Proportional hydraulic joystick controls for intuitive and precise boom movements
- Smooth and automatic basket leveling
- Full hydraulic ground levers
- Harness anchor points

# 61-36A



## OPTIONS

- Self-levelling outriggers
- Full hostile package protection
- Emergency descent 12V electric pump
- Radio remote control
- Non-marking soft rubber tracks
- Special painting
- Working lamp on basket
- Outriggers "sinking" alarm
- Teflon pads kit (4) for stabilizers;
- Strobe light (beacon)
- Casters on basket
- Winter start package

## POWERTRAIN OPTIONS

- Hatz diesel + AC motor (standard)
- Honda gas + electric AC motor
- Lithium Ion + Gas or diesel engine
- Lithium Ion

## RELIABILITY

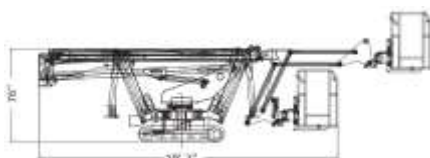
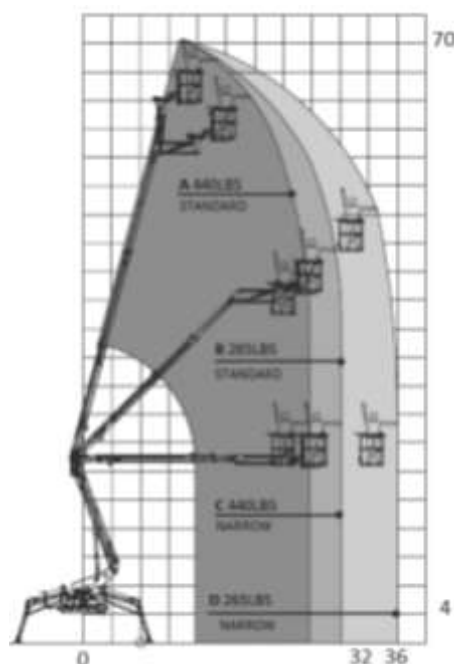
- High tensile steel boom Domex SSAB
- Standard high quality components like Sauer Danfoss, Telemecanique, Finder
- External power track for easier inspection and repairs
- External adjustable telescopic boom wear pads; no shimming required
- Greasable fittings in all pivot points
- High quality powder coat paint

## DIMENSIONS AND SPECS

Working height	70'
Basket capacity	440 lbs
Maximum horizontal side reach	
with 265 lbs	36' - 0"
with 440lbs	29' - 5"
Minimum length	19' - 2"
Minimum width	34.5"
Basket dimensions (L x W x H)	
Aluminum	55" x 28"
One man fiber	30" x 28"
Two men fiber	44" x 28"
Turret rotation	360 degrees
Max slope travel ability	32° or 62 %
Outriggers footprint	Standard 11'-6" X 11'-6"
	Narrow 8'-3" X 14'-7"
Total weight diesel	6 613 lbs

## PRODUCTIVITY

- Work side way even in narrow mode
- Easy to haul at only 6600 lbs
- Top mount lifting points for crane
- 4x tie down anchor points
- High departure angle for climbing
- **NO custom made trailer required**
- High ground clearance



**Simple Inside™**



# 70-36AJ

## CAPABILITY

- 70' working height
- 36' horizontal reach
- 440 lbs lift capacity
- Multiple positions swing-out outriggers
- Intuitive electro-hyd basket controls
- Work sideways in narrow mode
- Long travel outriggers

## STANDARD FEATURES

- Choice of motorisation
- Wired remote control
- Outriggers control from remote
- Long travel outriggers
- Hydraulic basket rotator
- Movement alarm
- Extra-long black rubber tracks
- Aluminium basket- Detachable
- Basket rotation hydraulic
- AC power to basket
- Air-Water line to basket
- Proportional controls
- Hour meter
- Manual emergency descent system
- Jjb raising enable while driving for better clearance while climbing
- Top mount lifting points for crane

## SAFETY

- Basket anti overweight redundant mechanical switches
- Active stability management system with redundant system
- Easy to read operational pilot lamps
- Wind safe up to 28Mph (45 Kph)
- Solid state and simple electrical and hydraulic components
- Proportional electro-hydraulic joystick controls for intuitive and precise boom movements
- Smooth and automatic basket leveling + manual override
- Full hydraulic ground levers
- Harness anchor points



## OPTIONS

- Self-levelling outriggers
- Full hostile package protection
- Emergency descent 12V electro pump
- Non-marking soft rubber tracks
- Special painting
- Working lamp on basket
- Outriggers "sinking" alarm
- Teflon pads kit (4) for stabilizers;
- Strobe light (beacon)
- Casters on basket
- Winter start package

## SAFETY

- Basket anti overload device
- Dual stability management system
- Easy to read operational pilot lamps
- Wind safe up to 28Mph (45 Kph)
- Solid state simple electrical components
- Proportional joystick controls for intuitive and precise movements
- Smooth and automatic basket leveling
- Full hydraulic ground levers
- Harness anchor points
- 4x oversized tie down anchor points

## PRODUCTIVITY

- Work side way even in narrow mode
- Easy to haul at only 7165lbs
- Top mount lifting points for crane
- 4x oversized tie down anchor points
- 100° amplitude articulated jib
- High departure angle for climbing anywhere.
- NO custom made trailer required
- Double speed hydraulic pumps for faster and simultaneous boom operations
- Standard jib raising enable while driving for better clearance while climbing
- 400° turret rotation

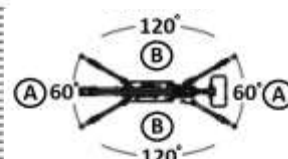
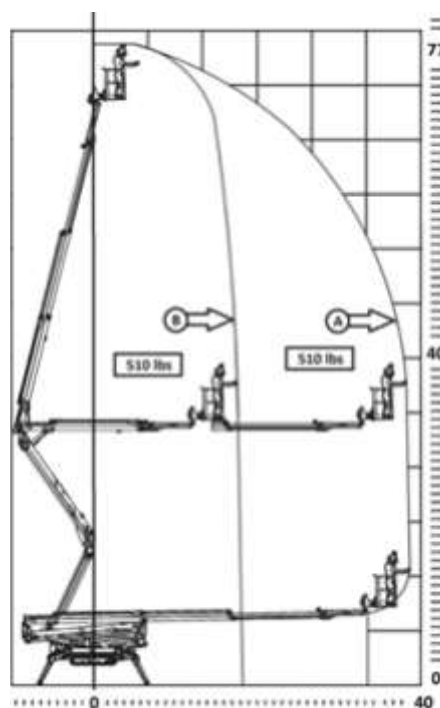


## POWERTRAIN OPTIONS

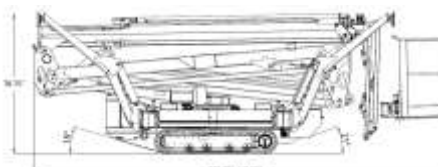
- Kubota diesel + AC motor (standard)
- Kubota diesel + Lithium Ion

## DIMENSIONS AND SPECS

• Working height	77'
• Basket capacity @ full outreach	510 lbs
• Horizontal reach	
With outriggers in standard setting	40'
Front / Rear in narrow setting	40'
Side way in narrow outriggers settings	20'
• Length	
without basket	17'-5"
with basket	19'-5"
• Height when driving	78.75"
• 5 feet length articulated jib motion	100°
• Min / Max width	38.5" / 51"
• Basket dimensions (L x W x H)	
Aluminum	55" x 28"
One man fiber	30" x 28"
Two men fiber	44" x 28"
• Turret rotation	400 degrees
• Max slope travel ability	32° or 62 %
• Outriggers footprint	
Standard	12'-9" X 12'-6"
Narrow	8'-3" X 16'-9"
• Total weight diesel	7 165 lbs
• Total weight diesel + Lithium	7 605 lbs



**Kubota**  
Power | Reliability



**Simple Inside™**

## CAPABILITY

- 77' working height
- 40' horizontal reach unrestricted
- 510 lbs lift capacity
- Multiple positions swing-out outriggers
- Outriggers set up within 10 feet alley
- **Work sideways in narrow mode**
- Radio remote control
- High departure angle for climbing
- **NO custom made trailer required**

## STANDARD FEATURES

- Kubota diesel + electric AC motor
- Radio remote control
- Outriggers control from remote
- Long travel outriggers
- Hydraulic basket rotator
- Movement alarm
- Extra-long black rubber tracks
- Aluminium basket- Detachable
- Basket rotation hydraulic
- AC power to basket
- Air- Water line to basket
- Proportional controls
- Hour meter
- Manual emergency descent system
- 400° turret rotation
- Jjb raising enable while driving for better clearance while climbing
- Top mount lifting points for crane

## RELIABILITY

- High tensile steel boom Domex SSAB
- Standard high quality components like Sauer Danfoss, Telemecanique, Finder
- Patented telescopic boom power-track for easier replacement of components
- External adjustable telescopic boom wear pads; no shimming required
- Simple and painless 12 Volts system
- High quality powder coat paint

# 77-40AJ



## RELIABILITY

- High tensile steel boom Domex SSAB
- High quality components like Marzocchi, Kubota, Sauer Danfoss, Telemecanique,
- Patented internal telescopic power-track for easier replacement of components
- External adjustable telescopic boom wear pads; no shimming required
- High quality powder coat paint
- Easy to use emergency boom descent system
- Emergency recovery system for drive

## DIMENSIONS AND SPECS

• Working height		87'
• Basket capacity		510 lbs
• Horizontal reach	with 265lbs	48'
	with 510lbs	42'
	Front / Rear in narrow setting	48'
• Jib articulation	Down	-80°
	Up	+80°
• Below ground reach		Minus 25'
• Length	without basket	19'-7"
	with basket	21'-7"
• Height when driving		79" / 84"
• 5 feet length articulated jib motion		140° (-80° / + 60°)
• Min / Max width		35.5" / 51"
• Basket dimensions (L x W x H)		
	Aluminum	55" x 28"
	One man fiber	30" x 28"
	Two men fiber	44" x 28"
• Turret rotation		400 degrees
• Max slope travel ability		32° or 62 %
• Outriggers footprint	Standard	14'-9" X 19'-0"
	Narrow	10'-4" X 22'-7"
• Total weight	Diesel	8300 lbs
	Diesel + Lithium	8600 lbs

## PRODUCTIVITY

- Work side way even in narrow mode
- Easy to haul at only 8300 lbs
- Top mount lifting points for crane
- 140° amplitude articulated jib
- High departure angle for climbing
- High ground clearance **NO custom made trailer required**
- Double speed hydraulic pumps for faster and simultaneous movement
- Standard jib raising enable while driving for better climbing

## OPTIONS

- Full hostile package protection
- Non-marking tracks
- Special painting
- Working lamp on basket
- Outriggers "sinking" alarm
- Teflon pads kit (4) for stabilizers;
- Strobe light (beacon)
- Casters on basket
- Winter start package

**Kubota**  
Power | Reliability

**Simple Inside™**

# 87-48AJ

## CAPABILITY

- 87' working height
- 48' horizontal reach with 265 lbs
- 510 lbs lift capacity
- Below ground level reach
- Outriggers set-up in 9 feet alley
- 35 inches overall width retracted
- **NO custom made trailer required**
- Std 12Volts electrical system
- **Work sideway in narrow stance**
- Super low ground pressure
- Live hydraulic ground controls

## STANDARD FEATURES

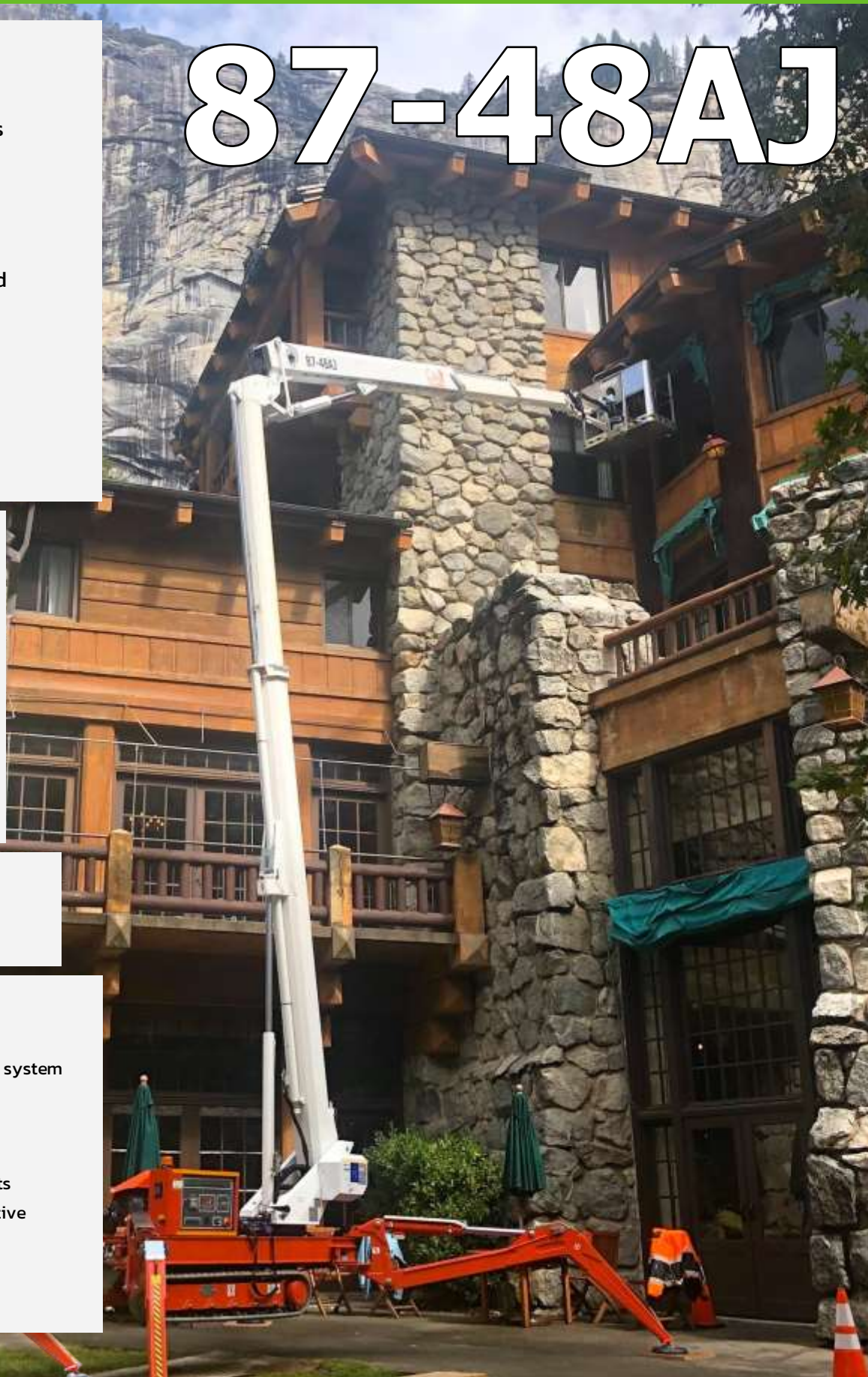
- Kubota diesel + electric AC motor
- Wireless radio remote control
- Outriggers control from remote
- Long travel outriggers
- Self leveling outriggers
- Hydraulic basket rotator
- Movement alarm
- Aluminium basket- Detachable
- Basket rotation hydraulic
- AC power to basket

## POWERTRAIN OPTIONS

- Kubota diesel + AC motor (standard)
- Kubota diesel + Lithium Ion

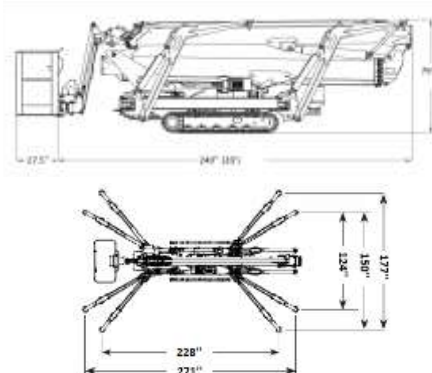
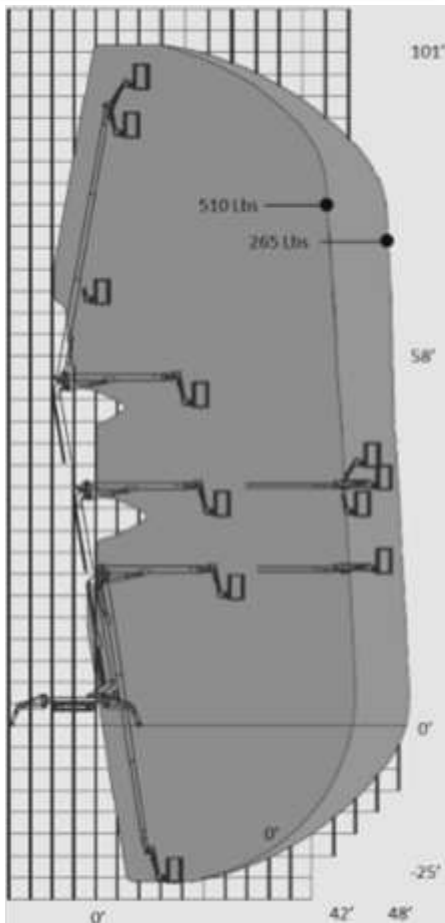
## SAFETY

- Basket anti over-load system
- Active envelope stability management system with redundant sensors
- Easy to read operational pilot lamps
- Wind safe up to 28Mph (45Kph)
- Solid state simple electrical components
- Proportional joystick controls for intuitive and precise boom movements
- Smooth and automatic basket leveling
- Harness anchor points



## OPTIONS

- Full hostile package protection
- Non-marking tracks
- Special painting
- Working lamp on basket
- Outriggers "sinking" alarm
- Teflon pads kit (4)  
for stabilizers;
- Strobe light (beacon)
- Casters on basket
- Winter start package



## DIMENSIONS AND SPECS

• Working height		101'
• Basket capacity		510 lbs
• Horizontal reach	with 265lbs	48'
	with 510lbs	42'
	Front / Rear in narrow setting	48'
• Jib articulation	Down	-80°
	Up	+80°
• Below ground reach		Minus 25'
• Length	without basket	19'-7"
	with basket	21'-7"
• Height when driving		79" / 84"
• 5 feet length articulated jib motion		140° (-80° / + 60°)
• Min / Max width		35.5" / 51"
• Basket dimensions (L x W x H)		
	Aluminum	55" x 28"
	One man fiber	30" x 28"
	Two men fiber	44" x 28"
• Turret rotation		400 degrees
• Max slope travel ability		32° or 62 %
• Outriggers footprint	Standard	14'-9" X 19'-0"
	Narrow	10'-4" X 22'-7"
• Total weight	Diesel	9050 lbs
	Diesel + Lithium	9350 lbs

## PRODUCTIVITY

- Work side way even in narrow mode
- Easy to haul at only 9050 lbs
- Top mount lifting points for crane
- 140° amplitude articulated jib
- High departure angle for climbing
- High ground clearance **NO custom made trailer required**
- Double speed hydraulic pumps for faster and simultaneous boom operations
- Standard jib raising enable while driving for better climbing

## RELIABILITY

- High tensile steel boom Domex SSAB
- High quality components like Marzocchi, Kubota, Sauer Danfoss, Telemecanique,
- Patented internal telescopic power-track for easier replacement of components
- External adjustable telescopic boom wear pads; no shimming required
- High quality powder coat paint
- Easy to use emergency boom descent system
- Emergency recovery system for drive

**Kubota**  
Power | Reliability

**Simple Inside™**

## **CAPABILITY**

- 101' working height
- 48' horizontal reach with 265 lbs
- 510 lbs lift capacity
- Below ground level reach
- Outriggers set-up in 9 feet alley
- 35 inches overall width retracted
- **NO custom made trailer required**
- Std 12Volts electrical system
- **Work sideway in narrow stance**
- Super low ground pressure
- Live hydraulic ground controls

## **STANDARD FEATURES**

- Kubota diesel + electric AC motor
- Wireless radio remote control
- Outriggers control from remote
- Long travel outriggers
- Self leveling outriggers
- Hydraulic basket rotator
- Movement alarm
- Aluminium basket- Detachable
- Basket rotation hydraulic
- AC power to basket
- Air-Water line to basket
- Proportional controls

## **POWERTRAIN OPTIONS**

- Kubota diesel + AC motor (standard)
- Kubota diesel + Lithium Ion

## **SAFETY**

- Basket anti over-load system
- Active envelope stability management system with redundant sensors
- Easy to read operational pilot lamps
- Wind safe up to 28Mph (45Kph)
- Solid state simple electrical components
- Proportional joystick controls for intuitive and precise boom movements
- Smooth and automatic basket leveling
- Harness anchor points

# 101-48AJ

## PRODUCTIVITY

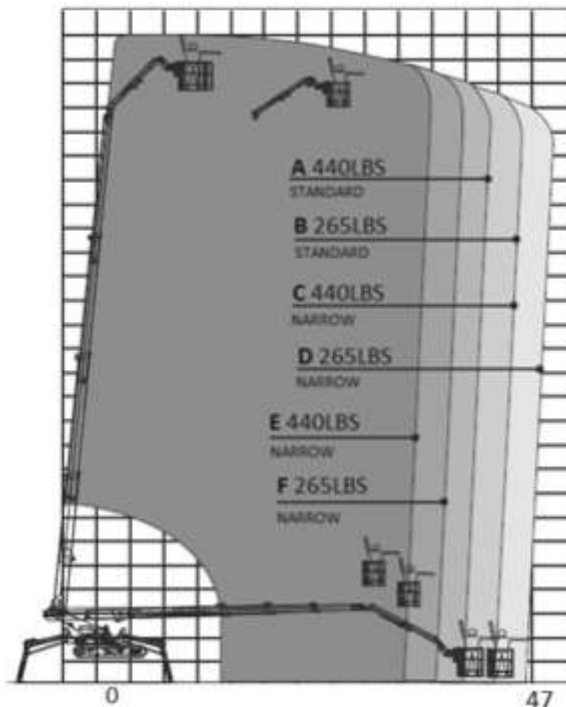
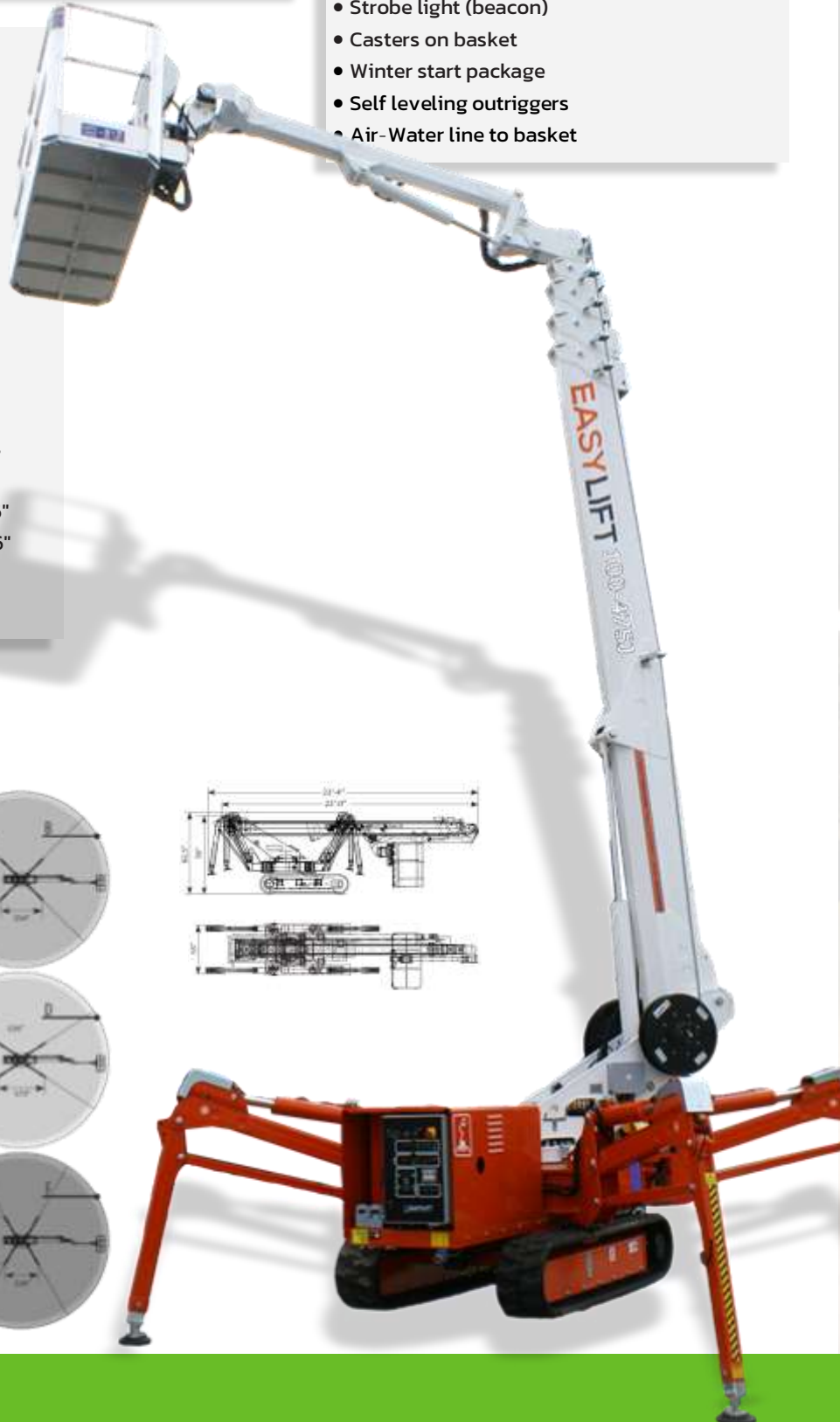
- Work side way even in narrow mode
- Easy to haul at only 13200 lbs
- Top mount lifting points for crane
- 180° amplitude articulated jib motion
- High departure angle for climbing
- High ground clearance
- **NO custom made trailer required**
- Double speed hydraulic pumps for faster and simultaneous boom operations
- Standard boom raising while driving

## OPTIONS

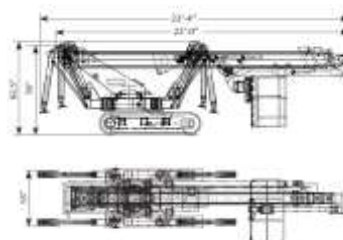
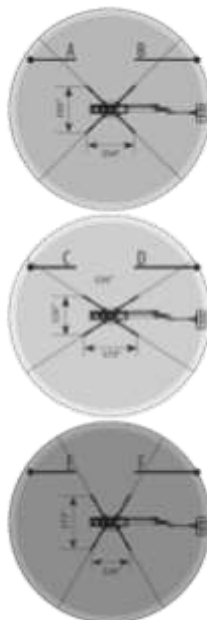
- Non-marking tracks
- Special painting
- Working lamp on basket
- Outriggers "sinking" alarm
- Teflon pads kit (4) for stabilizers;
- Strobe light (beacon)
- Casters on basket
- Winter start package
- Self leveling outriggers
- Air-Water line to basket

## DIMENSIONS AND SPECS

• Working height		100'
• Basket capacity		440 lbs
• Horizontal reach	with 265lbs	47'
	with 440lbs	42'-7"
	Front / Rear in narrow setting	47'
• Below ground reach		Minus 10'
• Length		23'-4"
• Height when driving		78" / 82.5"
• 10 feet length articulated jib motion		180°
• Width		55"
• Basket dimensions (L x W x H)		79" x 28"
• Turret rotation		360 degrees
• Max slope travel ability		17° or 32 %
• Outriggers footprint	Standard	12'-6" X 12'-6"
	Narrow	14'-7" X 10'-6"
• Total weight	Diesel	13,200 lbs
	Diesel + Lithium	13 500 lbs



100



**Simple Inside™**

# 100-47SJ

## CAPABILITY

- 100' working height
- 47' horizontal reach with 265 lbs
- 440 lbs lift capacity
- Below ground level reach
- Outriggers set-up in 11 feet alley
- Fit thru a double standard door
- **NO custom made trailer required**
- **Work sideway in narrow stance**
- Super low ground pressure
- Live hydraulic ground controls

## STANDARD FEATURES

- Hatz silenced diesel + electric AC motor
- Wireless radio remote control
- Outriggers control from remote
- Long travel outriggers
- Hydraulic basket rotator
- Movement alarm
- Aluminium basket- Detachable
- Basket rotation hydraulic
- AC power to basket
- Proportional controls

## SAFETY

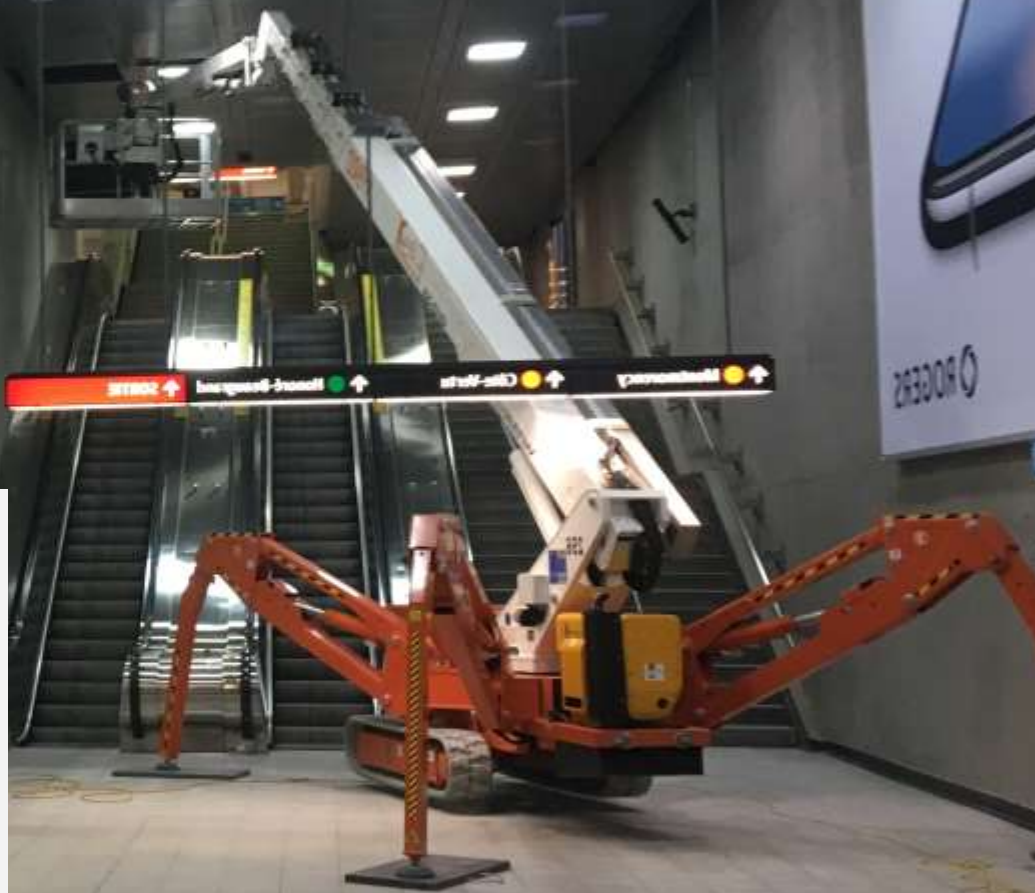
- Basket anti over-load system
- Active envelope stability management system with redundant sensors
- Easy to read operational pilot lamps
- Wind safe up to 28Mph (45Kph)
- Solid state simple electrical components
- Proportional and precise joystick controls
- Automatic basket leveling
- Harness anchor points

## RELIABILITY

- High tensile steel boom Domex SSAB
- High quality components like Marzocchi, Kubota, Sauer Danfoss, Telemecanique,
- External adjustable telescopic boom wear pads; no shimming required
- High quality powder coat paint
- Easy to use emergency boom descent system

## POWERTRAIN OPTIONS

- Silenced diesel + AC motor (standard)
- Silenced diesel + Lithium Ion
- Lithium Ion + AC motor



## DIMENSIONS AND SPECS

• Working height		116'
• Basket capacity		440 lbs
• Horizontal reach	with 265lbs	52'
	with 440lbs	47'
	Front / Rear in narrow setting	52'
• Below ground reach		Minus 16'
• Length		23'-6"
• Height when driving		84"
• 10 feet length articulated jib motion		180°
• Width		55"
• Basket dimensions (L x W x H)		79" x 28"
• Turret rotation		360 degrees
• Max slope travel ability		17° or 32 %
• Outriggers footprint	Standard	17'-0" X 17'-0"
	Narrow	12'-11" X 20'-0"
• Total weight	Diesel	14,330 lbs
	Diesel + Lithium	14 630 lbs

## POWERTRAIN OPTIONS

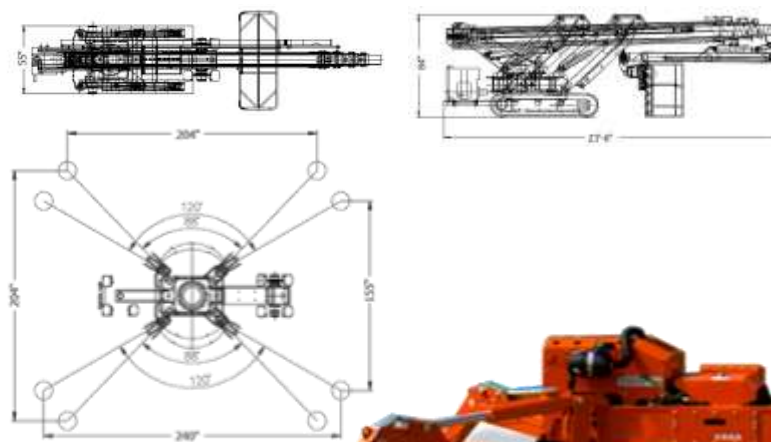
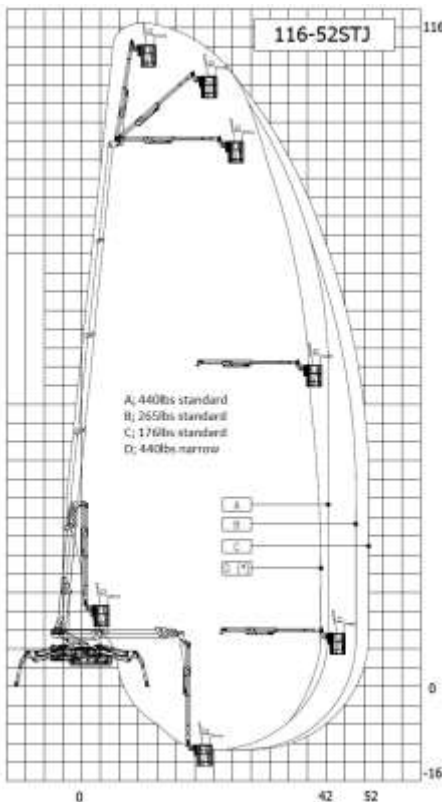
- Silenced diesel + AC motor (standard)
- Silenced diesel + Lithium Ion
- Lithium Ion + AC motor

## OPTIONS

- Non-marking tracks
- Special painting
- Working lamp on basket
- Outriggers "sinking" alarm
- Teflon pads kit for stabilizers
- Strobe light (beacon)
- Casters on basket
- Winter start package
- Self leveling outriggers
- Air-Water line to basket

## PRODUCTIVITY

- Work side way even in narrow mode
- Top mount lifting points for crane
- 180° amplitude articulated jib
- High departure angle for climbing on trailer
- High ground clearance
- Double speed hydraulic pumps for faster and simultaneous boom operations



**Simple Inside™**

## **CAPABILITY**

- 116' working height
- 52' horizontal reach with 265 lbs
- Telescopic articulated Jib
- 440 lbs lift capacity
- Below ground level reach
- Outriggers set-up in 11 feet alley
- Fit thru a double standard door
- **NO custom made trailer required**
- **Work sideway in narrow stance**
- Super low ground pressure

## **STANDARD FEATURES**

- Hatz silenced diesel + electric AC motor
- Wireless radio remote control
- Outriggers control from remote
- Long travel outriggers
- Hydraulic basket rotator
- Movement alarm
- Aluminium basket- Detachable
- Basket rotation hydraulic
- AC power to basket
- Proportional controls


## **SAFETY**

- Basket anti over-load system
- Active envelope stability management system with redundant sensors
- Easy to read operational pilot lamps
- Wind safe up to 28Mph (45Kph)
- Solid state simple electrical components
- Proportional and precise joystick controls
- Automatic basket leveling
- Harness anchor points

## **RELIABILITY**

- High tensile steel boom Domex SSAB
- High quality components like Marzzochi, Kubota, Sauer Danfoss, Telemecanique,
- External adjustable telescopic boom wear pads; no shimming required
- High quality powder coat paint
- Easy to use emergency boom descent system

# 116-52STJ

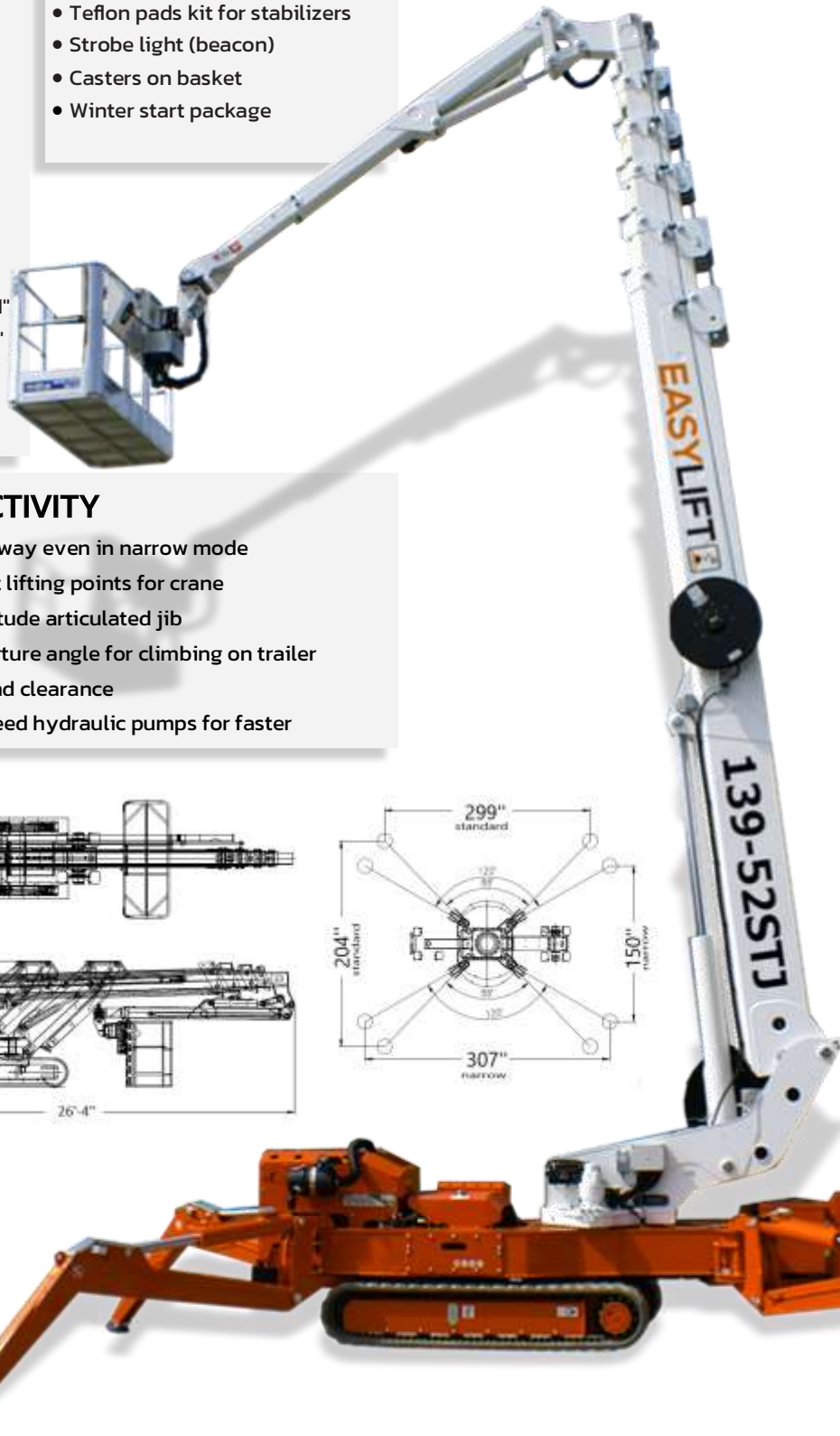


## DIMENSIONS AND SPECS

• Working height		139'
• Basket capacity		440 lbs
• Horizontal reach	with 265lbs	52'
	with 440lbs	47'
	Front / Rear in narrow setting	52'
• Below ground reach		Minus 16'
• Length		23'-6"
• Height when driving		84"
• 10 feet length articulated jib motion		180°
• Width		55"
• Basket dimensions (L x W x H)		79" x 28"
• Turret rotation		360 degrees
• Max slope travel ability		17° or 32 %
• Outriggers footprint	Standard	17'-0" X 24'-11"
	Narrow	12'-6" X 25'-7"
• Total weight	Diesel	18 500 lbs
	Diesel + Lithium	18 900 lbs

## OPTIONS

- Non-marking tracks
- Special painting
- Working lamp on basket
- Outriggers "sinking" alarm
- Teflon pads kit for stabilizers
- Strobe light (beacon)
- Casters on basket
- Winter start package

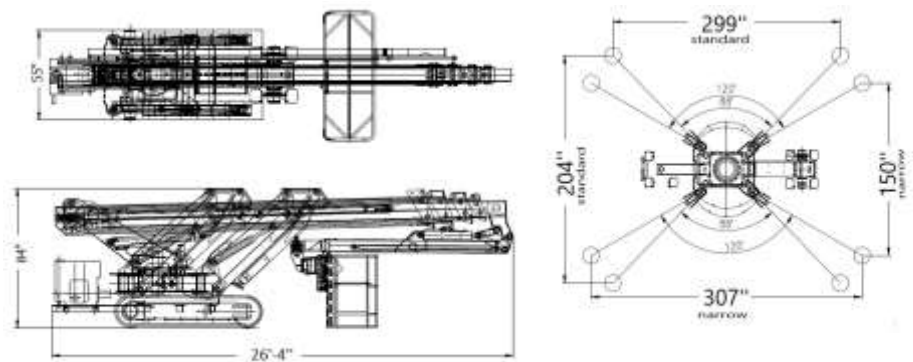
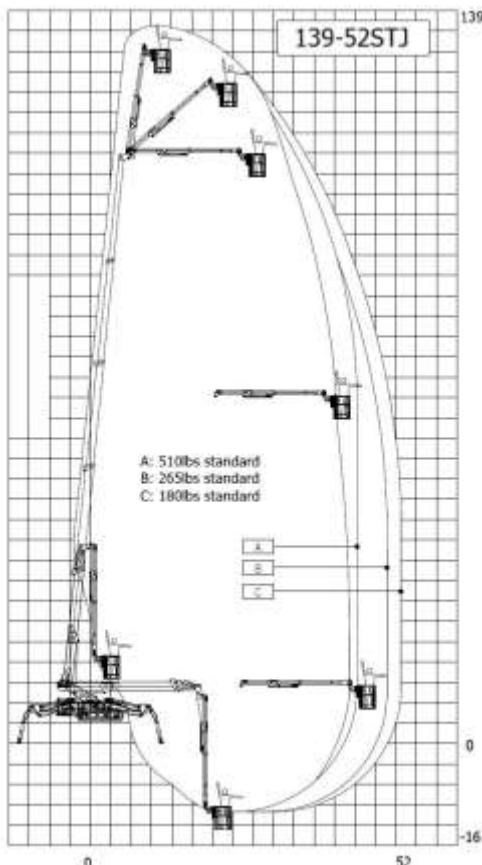


## POWERTRAIN OPTIONS

- Silenced diesel + AC motor (standard)
- Silenced diesel + Lithium Ion

## PRODUCTIVITY

- Work side way even in narrow mode
- Top mount lifting points for crane
- 180° amplitude articulated jib
- High departure angle for climbing on trailer
- High ground clearance
- Double speed hydraulic pumps for faster



**Simple Inside™**

## CAPABILITY

- 139' working height
- 52' horizontal reach with 265 lbs
- Telescopic articulated Jib
- 440 lbs lift capacity
- Below ground level reach
- Outriggers set-up in 13 feet alley
- Fit thru a double standard door
- **NO custom made trailer required**
- **Work sideway in narrow stance**
- Super low ground pressure
- Live hydraulic ground controls

## STANDARD FEATURES

- Hatz turbo diesel + electric AC motor
- Wireless radio remote control
- Outriggers control from remote
- Long travel outriggers
- Hydraulic basket rotator
- Movement alarm
- Aluminium basket- Detachable
- Basket rotation hydraulic
- AC power to basket
- Proportional controls

## SAFETY

- Basket anti over-load system
- Active envelope stability management system with redundant sensors
- Easy to read operational pilot lamps
- Wind safe up to 28Mph (45Kph)
- Solid state simple electrical components
- Proportional and precise joystick controls
- Automatic basket leveling
- Harness anchor points

## RELIABILITY

- High tensile steel boom Domex SSAB
- High quality components like Marzocchi, Kubota, Sauer Danfoss, Telemecanique,
- External adjustable telescopic boom wear pads; no shimming required
- High quality powder coat paint
- Easy to use emergency boom descent system

# 139-52STJ

## DIMENSIONS AND SPECS

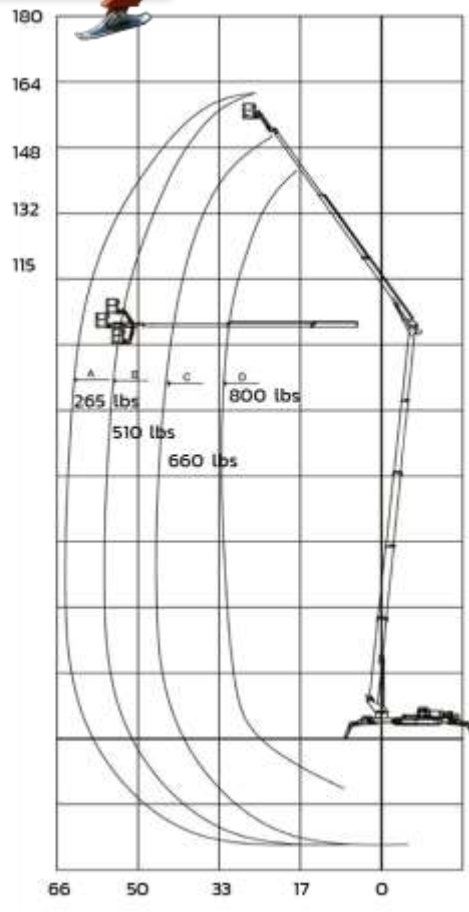
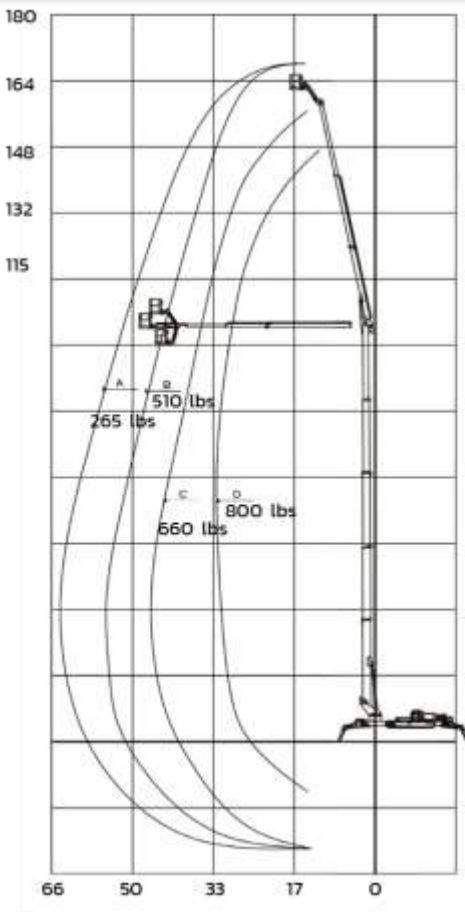
• Working height		172'
• Basket capacity		800 lbs
• Horizontal reach		66'
• Below ground reach		Minus 33'
• Length		29'-3"
• Height when driving		78"
• Jib articulation	Down Up	-80° +80°
• Width		52" / 78"
• Basket dimensions (L x W x H)		79" x 28"
• Turret rotation		400 degrees
• Max slope travel ability		17° or 32 %
• Outriggers footprint	Standard Narrow	18'-7" X 25'-6" 15'-6" X 30'-7"
• Total weight	Diesel Diesel + Lithium	31 600 lbs 31 900 lbs

## OPTIONS

- Non-marking tracks
- Special painting
- Working lamp on basket
- Outriggers "sinking" alarm
- Teflon pads for stabilizers
- Strobe light (beacon)
- Casters on basket
- Winter start package
- Self leveling outriggers
- Air-Water line to basket

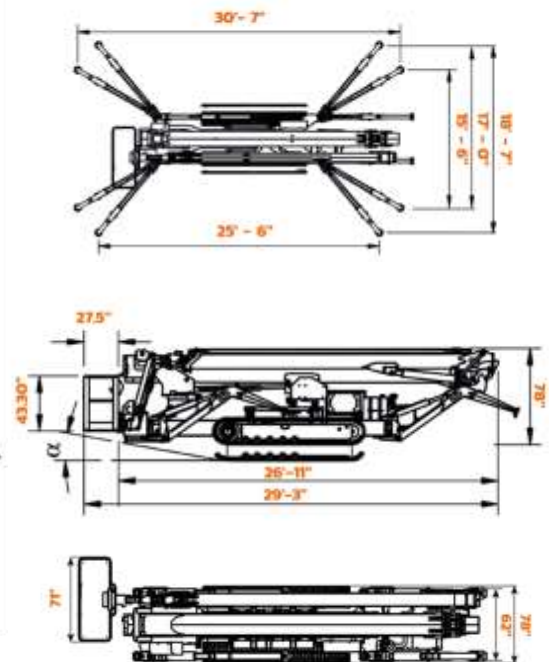
## PRODUCTIVITY

- Work side way even in narrow mode
- Easy to haul at only 13200 lbs
- Top mount lifting points for crane
- 180° amplitude articulated jib
- High departure angle for climbing
- High ground clearance
- Double speed hydraulic pumps
- Jib raising while driving



## POWERTRAIN OPTIONS

- Silenced diesel + AC motor (standard)
- Silenced diesel + Lithium Ion
- Lithium Ion + AC motor



**Simple Inside™**

## CAPABILITY

- 172' working height
- 66' horizontal reach
- High amplitude articulated Jib
- 800 lbs lift capacity
- Below ground level reach
- Outriggers set-up in 16 feet alley
- Fit thru a double standard door
- **NO custom made trailer required**
- **Work sideway in narrow stance**
- Super low ground pressure
- Live hydraulic ground controls

## STANDARD FEATURES

- Hatz turbo diesel + electric AC motor
- Wireless radio remote control
- Outriggers control from remote
- Long travel outriggers
- Hydraulic basket rotator
- Movement alarm
- Aluminium basket- Detachable
- Basket rotation hydraulic
- AC power to basket
- Proportional controls
- Hour meter
- Back up emergency descent system

## SAFETY

- Basket anti over-load system
- Active envelope stability management system with redundant sensors
- Easy to read operational pilot lamps
- Wind safe up to 28Mph (45Kph)
- Solid state simple electrical components
- Proportional and precise joystick controls
- Automatic basket leveling
- Harness anchor points

## RELIABILITY

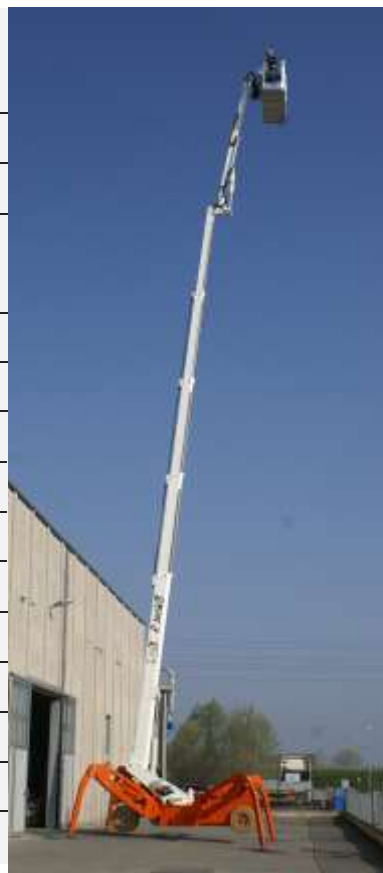
- High tensile steel boom Domex SSAB
- High quality components like Marzocchi, Kubota, Sauer Danfoss, Telemecanique,
- External adjustable telescopic boom wear pads; no shimming required
- High quality powder coat paint
- Easy to use emergency boom descent system

# 172-66AJ



## DIMENSIONS AND SPECS

		85-42SJW	100-47SJW	116-52STJW	139-52STJW
• Working height		85'	100'	116'	139'
• Basket capacity at full height		440 lbs	440lbs	440lbs	510 lbs
• Maximum horizontal side reach					
with 180lbs		42'	47'	52'	52'- 0"
with 265lbs		42'	47'	49'	51'- 0"
with Max Load		40'	42'	46'	49'-0"
• Length		21'- 8"	22'	24'- 4"	24'- 11"
• Overall width in travel		31.5"	31.5"	49.5"	51"
• Overall height in travel		75"	75"	83"	87"
• Basket dimensions (L x W x H)		79" x 28"	79" x 28"	79" x 28"	79" x 28"
• Turret rotation		360 degrees	360 degrees	360 degrees	360 degrees
• Max slope travel ability		17 Deg or 32%	17 Deg or 32%	17 Deg or 32%	17 Deg or 32%
• Outriggers footprint	Standard	12'- 6" x 12'- 6"	12'- 6" x 12'- 6"	17'-2" x 17'-2"	17'-2" x 20'-3"
	Narrow	14'- 7" x 10'- 6"	14'- 7" x 10'- 6"	20'-3" x 13'-1"	25'-0" x 12'-5"
• Total weight diesel		10 582 lbs	13 200lbs	14 300 lbs	18 734 lbs



## OPTIONS

- Non-marking wheels
- Special painting
- Working lamp on basket
- Outriggers "sinking" alarm
- Teflon pads for stabilizers
- Strobe light (beacon)
- Casters on basket
- Winter start package
- Self leveling outriggers
- Air-Water line to basket

## PRODUCTIVITY

- Work side way even in narrow mode
- Top mount lifting points for crane
- 180° amplitude articulated jib
- High departure angle for climbing
- High ground clearance
- Double speed hydraulic pumps
- Boom raising while driving

## RELIABILITY

- High tensile steel boom Domex SSAB
- High quality components like Marzocchi, Kubota, Sauer Danfoss, Telemecanique,
- External adjustable telescopic boom wear pads; no shimming required
- High quality powder coat paint
- Easy to use emergency boom descent system

## SAFETY

- Basket anti over-load system
- Active envelope stability management system with redundant sensors
- Easy to read operational pilot lamps
- Wind safe up to 28Mph (45Kph)
- Solid state simple electrical components
- Proportional and precise joystick controls
- Automatic basket leveling
- Harness anchor points



**Simple Inside™**

## **CAPABILITY**

- From 85' to 139' working height
- 42 to 52' horizontal reach
- High amplitude articulated Jib
- 440 lbs lift capacity
- Below ground level reach
- Multiple outriggers set-up
- Super low ground pressure
- Live hydraulic ground controls

## **STANDARD FEATURES**

- Battery operated with combustion engine back-up; diesel or gas
- Wireless radio remote control
- Outriggers control from remote
- Long travel outriggers
- Hydraulic basket rotator
- Movement alarm
- Aluminium basket- Detachable
- Basket rotation hydraulic
- AC power to basket

**85-42SJW**

**100-47SJW**

**116-52STJW**

**139-52STJW**



# THE *Simple Inside* EXPERIENCE

## HOW YOUR NEW UNIT IS BUILT, PREPARED AND DELIVERED

Simple Inside™ is a lot more than a few words, a slogan or a Trademark. It is embedded in our corporate DNA and our fundamental way of conducting business. Simplicity doesn't stop at the choice of components or engineering of units. It is all the way down to the operation, official documents, procedures and human interactions. When everything is put together, it's a breeze.

- ✓ Online secure ordering
- ✓ Largest inventory in America
- ✓ Dedicated specialists
- ✓ Rush overnight shipping
- ✓ Fair pricing
- ✓ Ordering history and data

## UPPARTS

Our parts list is simple to read, shows clear pictures of components, parts numbers and quantity required to complete your work. Our parts representatives will assist you to find the right parts and will send it by overnight courier anywhere on the continent when required. We have the largest parts inventory for tracked lifts in North America, and our just-in-time management system insures to handle all orders in a timely manner with the best filling rate in the market.



## UPSERVICE

Easy Lift units are extremely simple and straightforward. We can already tell that roughly 3 issues out of 4 will be solved by a

single phone call. We will get the obvious out of the way and teach you how to do so yourself. Moving forward, we will need your eyes and fingers to gather the information we need to scratch our heads and come up with a solution. You will be in the driver's seat, not a passenger.

## MY UP

### FOR SIMPLE INSIDE COMMUNITY MEMBERS

My UP section is your own exclusive personal database and reference bank to find all the information you may need to perform any actions / diagnostic / repairs that will be required during your Easy Lift's lifetime.

You can count on us to complete this knowledge base upon request at any moment

Here a summary of the information you will find there:

- Familiarization training for operation video
- Electronic Operation manual + emergency procedure
- Electric & hydraulic schematics
- Library of written procedure
- "How to" video library
- Online parts ordering history
- Links to perform more actions

## THE CRAZY CANADIAN ADVANTAGE



### Who said it's complicated to buy in Canada ?

Since 1994, the NAFTA agreement, renewed in 2018 under USMCA, opened and liberalized trade between Canada and the United States. All goods are free to move from both sides of the border. Your unit will be delivered to your door without problems, complications or extra charges.

We are proudly Canadian and we offer you the best Italian lifts on the market. This means that when we leave the office in the evening with a feeling of accomplishment, we fight the polar bears at our door and go eat a good spaghetti with of course, maple syrup. **That's what being a Crazy Canuck is all about!**



[www.UPequip.ca](http://www.UPequip.ca)

**Contact us**

1-844-Upequip (873-7847)

Local 514-360-7191

**Write us**

[info@upequip.ca](mailto:info@upequip.ca)

**Visit us**

229 Calixa Lavallee

Vercheres, QC

Canada, JOL 2R0