

A red compact tracked crane is the central focus, positioned on a construction site. The crane has a long, articulated boom extending upwards and to the right. The base is mounted on a tracked system. In the background, there is a large structure under construction, heavily scaffolded. To the right, a yellow scissor lift is visible, with a worker on a platform. The ground is wet and reflective. The overall scene is an active construction environment.

Compact tracked cranes

2024

WHO WE ARE

Since 2001, UPequip is specialized in challenging access solutions. It is strongly embedded in our DNA to find a solution for any given access defiance. We are dedicated to provide customers easy, safe and reliable equipment to access hard-to-reach working areas. We strive to be an important part of our customers daily success and overall productivity.

We, at UPequip are committed to supply the best customer service and spread usage of the simplest, safest and fairest priced compact tracked lifts and cranes

Our team is composed of highly qualified technicians who's passion for learning never come to an end. The knowledge and experience we have gathered over time is invaluable. Not only do we understand perfectly how atrium compact tracked spider lifts and cranes are built, we know how to help and explain when operational and technical issues arise.



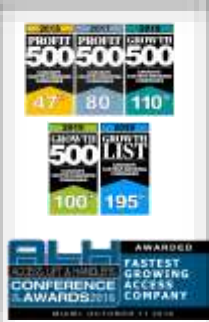
DID YOU KNOW

Did you know that UPequip is among the fastest growing companies in North America ?

For several years, we have been recognized as one of the fastest growing companies of any trade in North America and THE fastest growing Aerial Lift supplier. Our phenomenal growth has not been realized by any acquisitions of other companies but in an organic way. Our hard work to offer the best of ourselves and to stay focused on what made our success over the years; Listening, understanding and supporting.

OUR CAPABILITY

- Experience** A humble total of 142 years of crew experience in equipment based in North America; mechanics, sales and customer service. This is what we put at your disposal. More than a decade of strong and stable relationship with the same manufacturer Easy Lift and 21 years as a company. There's nothing that we cannot do !
- Inventory** Constant and increased production capability is the key to satisfy the avid demand for our growing brand. A large warehouse stuffed with parts available here in North America ensure you that your unit will be back and running as soon as possible. With more than 15,000 parts available off the shelf, we ship your order fast track with an impressive 99,1% fill rate (audited 2020)
- Facility** With more than 180 000 square feet of production and maintenance facilities, we are still growing and heading to expansion stage 4 and 5 to accommodate strong demand. State of the art workshop is the core of all production, assembly, repairs, maintenance and parts shipping.
- Support** Our response to online service request is second to none. We gather all required information in order to diagnose a problem and provide end users with both knowledge and parts to perform the repair.
- Knowledge** The experience and comprehension of units we've gathered over the years allow us to teach almost anyone to maintain and fix their units. There is no extensive mechanical or electrical skills required on your end to perform the task unless you decide to outsource it.
- Ownership** Your problem becomes our problem and we will do all that's required to address it. Meanwhile, our solutions must also become your solutions. It is a team work between you and us and goes both ways. Together, we will make miracles.



Cseries

- ✓ **Ultra narrow, from 29¹/₂ to 31¹/₂ inches**
- ✓ **Super strong, up to 8810 lbs cap.**
- ✓ **Amazing height, up to 72 feet**
- ✓ **Versatile with up and over capability**

- ✓ Superior structural steel laser cut and CNC hydro formed construction with SSAB Domex™
- ✓ Oversized heat treated corrosion resistant pivots points and linkages
- ✓ Superior lifting capability and best precise control on the market
- ✓ Heavy-duty rubber tracks with high tensile sealed internal steel cable with curbshield
- ✓ Longer tracks for increased climbing stability and better weight distribution for sensitive ground
- ✓ Robust undercarriage with serviceable idler wheels, hubs and motors
- ✓ Solid-state 12 Volts components
- ✓ Unique patented multiple positioning swing out and telescopic outriggers to set your crane anywhere
- ✓ Exclusive 200° articulated and telescopic jib with multiple telescopes
- ✓ Exclusive telescopic booms wear pads made of super slick UHDPE.
- ✓ Real time display for load, main + angles + length
- ✓ Easy to install accessories



LIVE MONITORING



SET IN CONFINED SPACE



ENTER ANY SINGLE DOOR



UP AND OVER CAPABILITY



7200 SET-UP POSSIBLE



CLIMB WITH EASE

C1e

**29.5" WIDTH
1380 LBS CAPACITY
16' LIFTING HEIGHT
PICK AND CARRY**

C6 Specifications

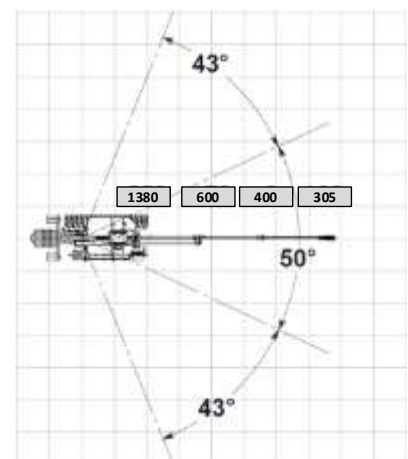
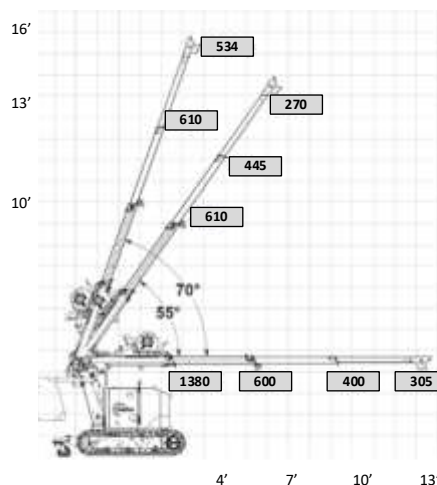
Max lift height with hydraulic telescopic Jib	16'
Max capacity	1380 lbs @ 3' radius
Horizontal outreach	305 lbs @ 13' out
Available configurations	24V Battery
Minimum size in travel position	29.5"w x 59"l x 55"h
Maximum width w. extended carriage	42"
Travel speed	Infinite proportional remote
Operational weight	1500 lbs
Counterweight	Variable position

C6 Features and options

- ✓ Wireless remote for boom, outriggers and drive
- ✓ LCD display on remote control for live chassis angle, boom and jib angle, height + reach, load
- ✓ Glow plugs and winter start package
- ✓ Pick and Carry capability
- ✓ Searcher hook
- ✓ Hydraulic winch 2200lbs/4400lbs/ 8800lbs
- ✓ Non-marking tracks
- ✓ Extending tracks
- ✓ Fast Idle automatic
- ✓ Storage boxes
- ✓ Special painting
- ✓ Special electric motor
- ✓ Vacuum lifter with remote control



C6 set-up and dimensions



C1 XXXX CAPACITY BOOM WITHIN 50° OF TURRET ROTATION

C6 / C6e

29.5" WIDTH
6940 LBS CAPACITY
52' LIFTING HEIGHT

C6 Specifications

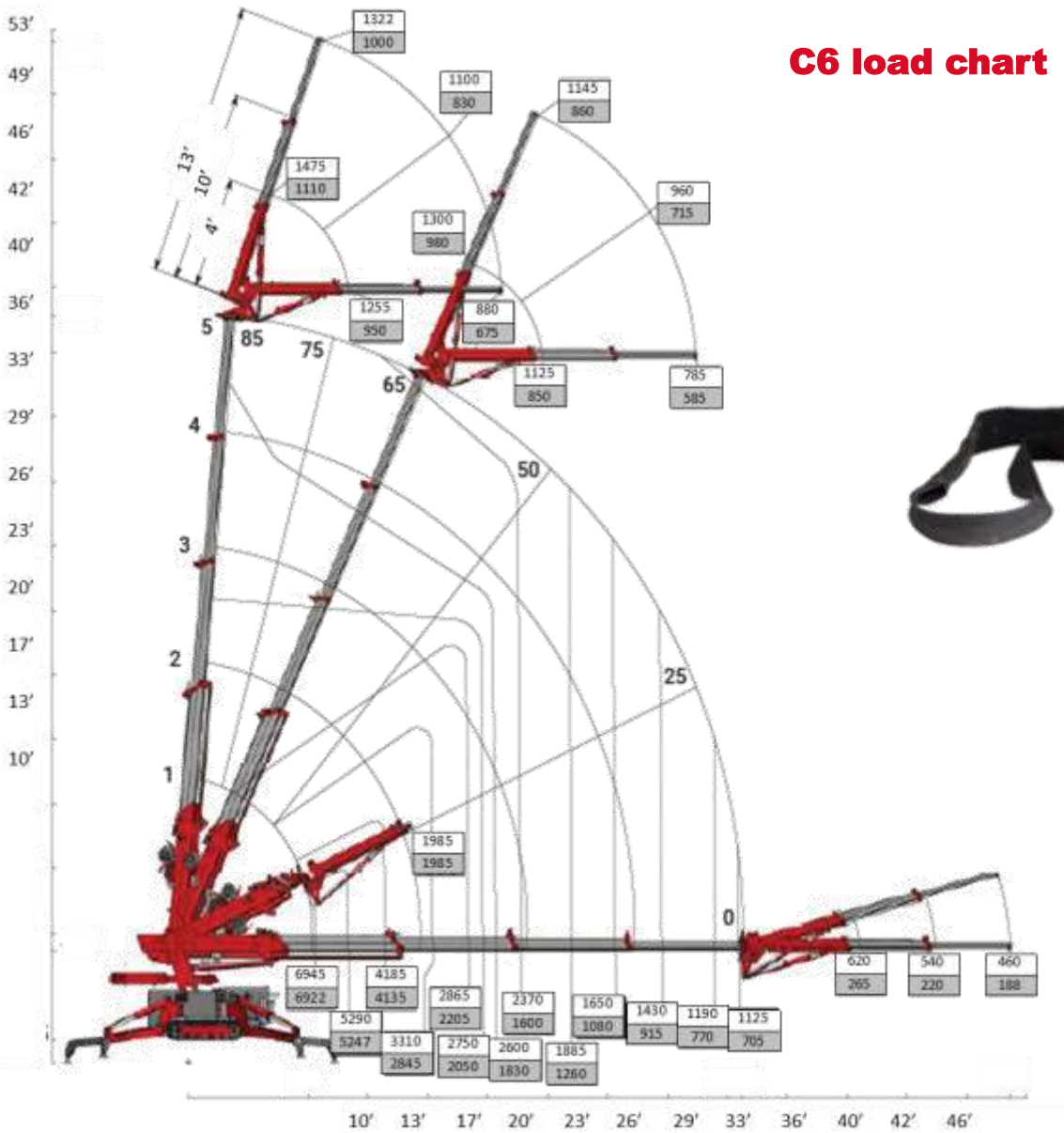


Max lift height with hydraulic telescopic Jib	52'
Max lift height without jib	38'
Max capacity	6940 lbs @ 6' radius
	5280 lbs @ 10' radius
	2200 lbs @ 20' radius
	1122 lbs @ 30' radius
Horizontal outreach	without jib 1157 lbs @ 33' out
	with jib 465 lbs @ 45' out
Available configurations	Yanmar diesel water cooled
	Full lithium battery
	Add-on 4 hp electric motor
Minimum size in travel position	29.5"w x 105"l x 67"h
Maximum width with extended carriage	42"
Travel speed	Infinite proportional remote
	+ 2 RPM speed. Up to 1,88 MPH
Operational weight without jib	5840 lbs
Operational weight with jib	6170 lbs
Counterweight	Variable deployment upon load
Maximal footprint on outriggers	165" x 173"
Minimal footprint on outriggers	32" x 177"
Outriggers set-up possibilities	
	With "infinite positioning" 7200 Possibilities
	With standard outriggers 48 Possibilities
Outriggers set up standard	3 positions each: 0°/45°/90°
Outriggers set up optional	Infinite positions 0° to 90°
Outriggers telescopic beam	Multiple, pinned or hydraulic

C6 Features and options

- ✓ Wireless remote for boom, outriggers and drive
- ✓ LCD display on remote control
- ✓ Reak time 'on screen' parameters
- ✓ Glow plugs and winter start package
- ✓ Pick and Carry capability with longer carriage
- ✓ Searcher hook
- ✓ Full hydraulic telescopic jib 3 booms
- ✓ Manual jib 36" x 30° adjustable
- ✓ Continuous slewing turret
- ✓ Hydraulic winch 2200lbs/4400lbs/ 8800lbs
- ✓ Telescopic outriggers
- ✓ Telescopic outriggers Full hydraulic
- ✓ Curved Outriggers end-tips
- ✓ Swing Out outriggers, 3 positions 0° / 45° / 90°
- ✓ Swing Out outriggers, with infinite rotation (each 1°)
- ✓ Non-marking tracks
- ✓ Extending tracks
- ✓ Fast Idle automatic

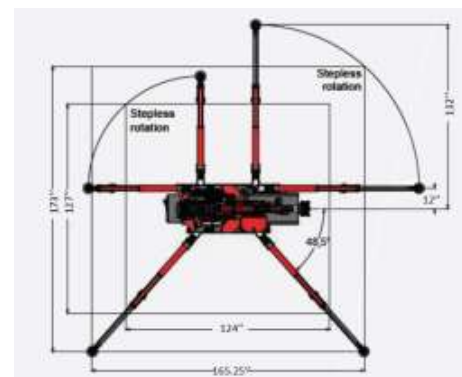
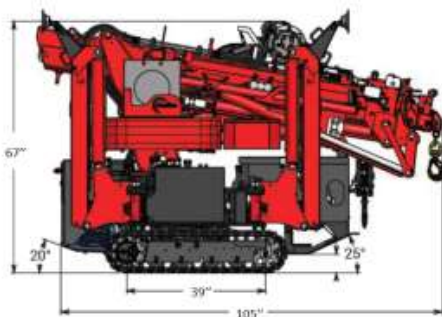
C6 load chart



C6

XXXX	CAPACITY WITH OUTRIGGERS EXTENDED
XXXX	CAPACITY WITH OUTRIGGERS RETRACTED

C6 set-up and dimensions



C10 / C10e

31.5" WIDTH
8810 LBS CAPACITY
72' LIFTING HEIGHT

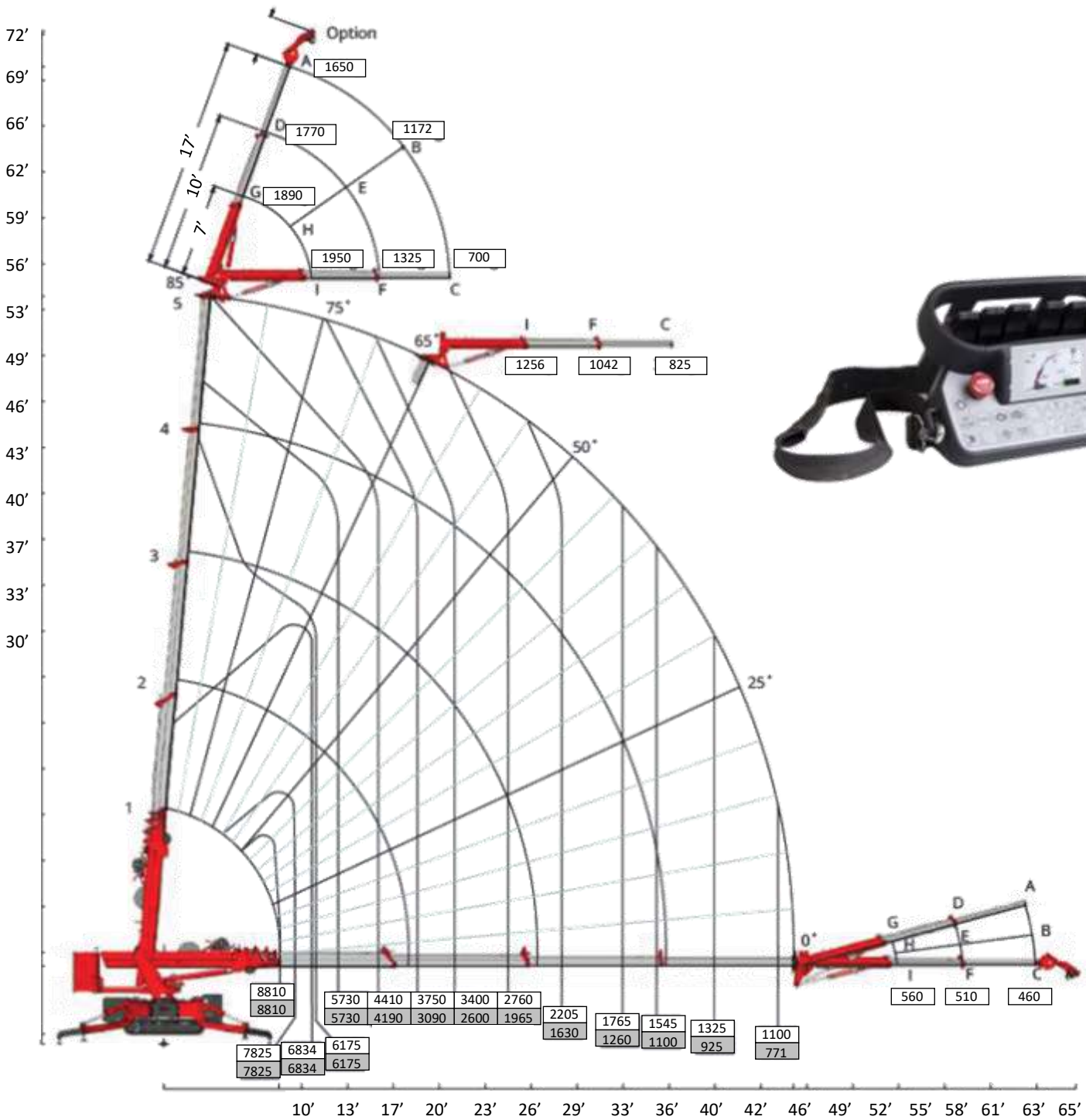
C10 Specifications

Max lift height with hydraulic telescopic Jib	72'
Max lift height without jib	53'
Max capacity	8810 lbs @ 6' radius
	6380 lbs @ 10' radius
	3740 lbs @ 20' radius
	2200 lbs @ 30' radius
Horizontal outreach	without jib 1100 lbs @ 45' out
	with jib 465 lbs @ 65' out
Available configurations	Yanmar diesel water cooled
	Full Lithium Ion
Minimum size in travel position	31.5"w x 151"l x 78"h
Maximum width with extended carriage	43"
Travel speed	Infinite proportional remote + 2 speed. 1,88 MPH
Operational weight without jib	8696 lbs
Operational weight with jib	10358 lbs
Counterweight	Variable deployment upon load
Maximal footprint on outriggers	180" x 180"
Minimal footprint on outriggers	36" x 184"
Outriggers set-up possibilities	80 Possibilities
Outriggers set up standard	5 positions each: 0° to 90°
Outriggers telescopic beam	Multiple positions, pinned



C10 Features and options

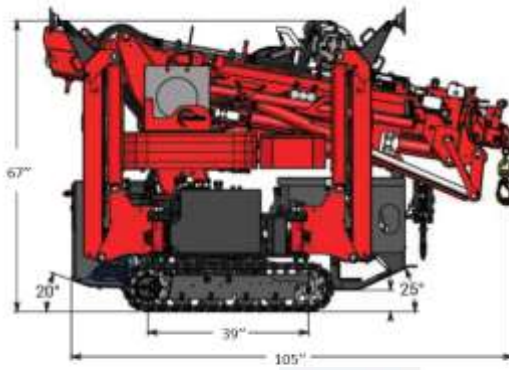
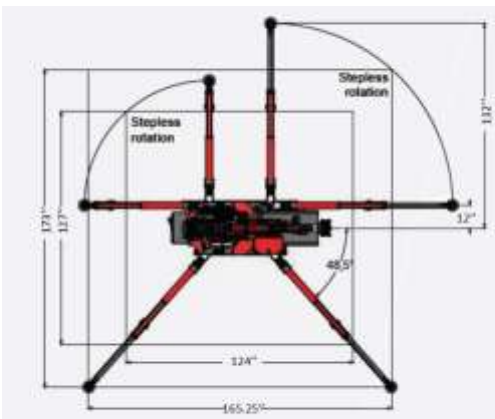
- ✓ Wireless remote for boom, outriggers and drive
- ✓ LCD display on remote control for live chassis angle, boom and jib angle, height + reach, load
- ✓ Glow plugs and winter start package
- ✓ Searcher hook
- ✓ Full hydraulic telescopic jib 3 booms
- ✓ Manual jib 36" x 30° adjustable
- ✓ Continuous slewing turret
- ✓ Hydraulic winch 2200lbs/4400lbs/ 8800lbs
- ✓ Telescopic outriggers
- ✓ Swing Out outriggers, 5 positions 0° to 90°
- ✓ Swing Out outriggers, with infinite rotation (each 1°)
- ✓ Non-marking tracks
- ✓ Extending tracks
- ✓ Fast Idle automatic
- ✓ Storage boxes
- ✓ Special painting



C10

xxxx CAPACITY WITH OUTRIGGERS EXTENDED
 xxxx CAPACITY WITH OUTRIGGERS RETRACTED

C10 set-up and dimensions



HOEFLOON

1-844-UP EQUIP.CA

COMPACT CRANES



VL Vacuum lifter

Could be hang from the main boom, jlb, winch cable or quick attach to the Multi-Tool

All models include:

- Rechargeable battery + spare battery
- Separate remote control for activation
- Transport dolly
- Suction cups covers

S600

- ✓Adaptable from 2 to 4 vacuum cups
- ✓Max 1300 lbs lifting capability
- ✓Weight 110-155 lbs
- ✓Mechanical rotation 360 with lock
- ✓Mechanical tilt multiple positions 0-90°



S800

- ✓Adaptable from 2, 4, or 6 vacuum cups
- ✓Max 1750 lbs lifting capability
- ✓Weight 125-180 lbs
- ✓Mechanical rotation 360 with lock
- ✓Mechanical tilt multiple positions 0-90°



S1000

- ✓Adaptable from 6 or 10 vacuum cups
- ✓Max 2200 lbs lifting capability
- ✓Weight 190-245 lbs
- ✓Mechanical rotation 360 with lock
- ✓Mechanical tilt multiple positions 0-90°



Contact us

Toll free 1-844-873-7847 (1-844-UPEquip)

Local 514-360-7191

Fax 450-583-3434

Write us

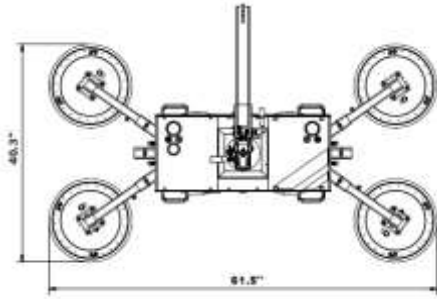
Parts parts@upequip.ca

Service service@upequip.ca

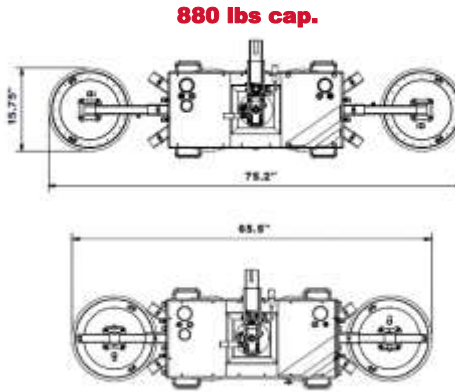
Sales info@upequip.ca

COMPACT CRANES

S600 dimensional

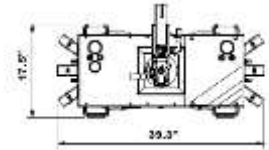


1300 lbs cap.



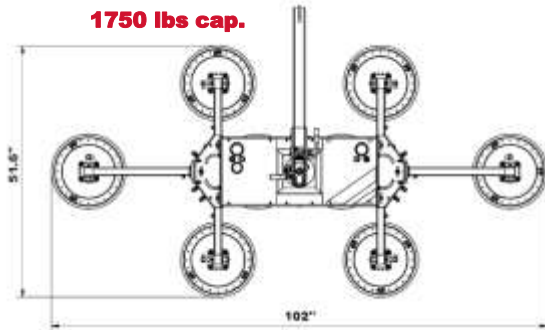
880 lbs cap.

880 lbs cap.

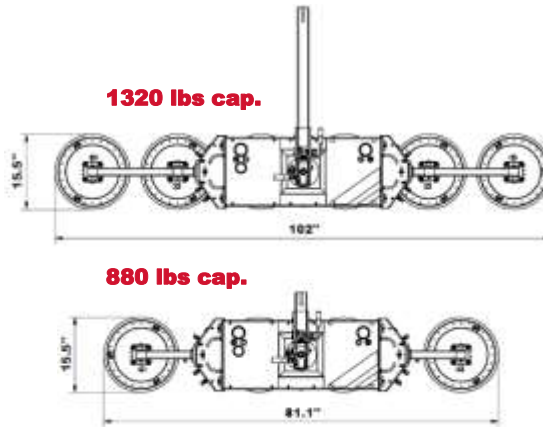


485 lbs cap.

S800 dimensional

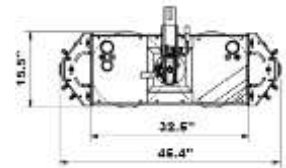


1750 lbs cap.



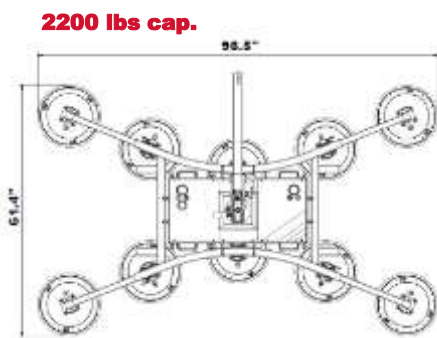
1320 lbs cap.

880 lbs cap.

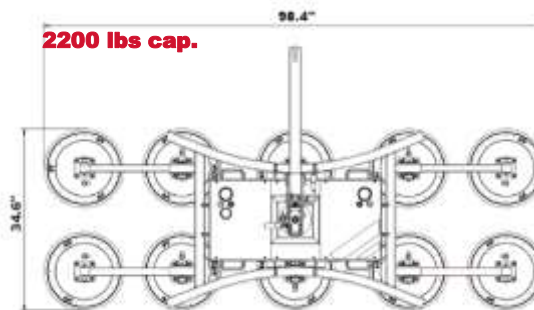


440 lbs cap.

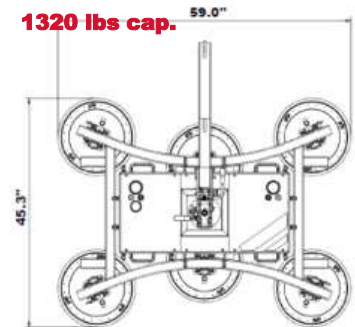
S1000 dimensional



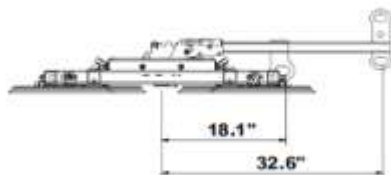
2200 lbs cap.



2200 lbs cap.



1320 lbs cap.



Contact us

Toll free 1-844-873-7847 (1-844-UPEQUIP)

Local 514-360-7191

Fax 450-583-3434

Write us

Parts parts@upequip.ca

Service service@upequip.ca

Sales info@upequip.ca

MT C6 and C10 Multi Tool

Available in many configuration - Pipe and Beam claw + H-Beam gripper
- Forks
- Vacuum



Multi Tool main arm

- ✓ Easy install on main boom of the C6 and C10
- ✓ Hydraulic quick couplers
- ✓ Updated remote control with multitool joystick
- ✓ 200° tilt angle
- ✓ +45° / -50° swivel angle



Claw / H-Beam Gripper

- ✓ Fit on multi-tool main arm easily
- ✓ 2750lbs capacity for Claw system
- ✓ 2750lbs capacity for H-Beam Gripper
- ✓ Infinite 360° rotation
- ✓ Removable clamping plate on claw tips
- ✓ 4400 lbs bottom lifting hook



Rotative Head

- ✓ Fit on multi-tool main arm easily
- ✓ Perfect for vacuum lifter S600 /S800/S1000
- ✓ Up to 2200lbs capacity
- ✓ Suit glass ceiling installation
- ✓ Infinite 360° rotation
- ✓ 4400 lbs bottom lifting hook



Forks set

- ✓ Fit on multi-tool main arm easily
- ✓ transform your crane into a Roto Forklift
- ✓ Up to 2200lbs capacity
- ✓ Fork tilt left and right for better placement
- ✓ Fork length of 31.5"
- ✓ 4400 lbs bottom lifting hook

Contact us

Toll free 1-844-873-7847 (1-844-UPEQUIP)

Local 514-360-7191

Fax 450-583-3434

Write us

Parts parts@upequip.ca

Service service@upequip.ca

Sales info@upequip.ca



Compact tracked cranes

HOEFLON[®]

UP
EQUIP